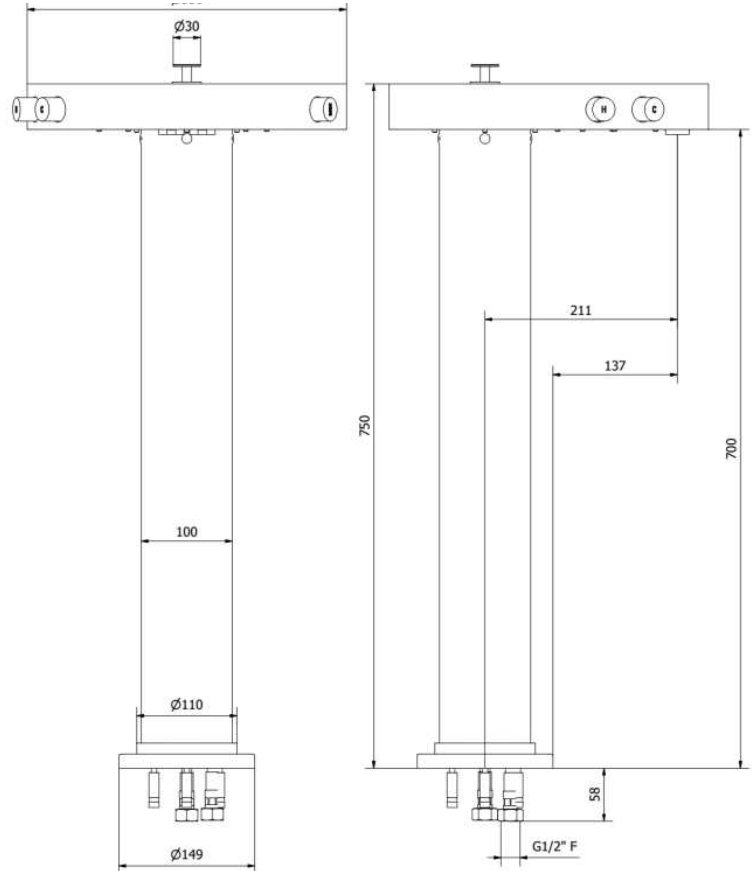


AQUABRASS

CL85NM



Product Description

Floormount tub filler with hidden handshower

- solid brass construction
- crystal clear water flow
- hot and cold water temperature controls
- dual water output
- hidden microphone handshower with 5' grey nylon hose
- push-button diverter
- 1/2" connection

height: 29^{1/2"}

overall projection: 13^{3/4"}

flow rate: (tub filler) 6.5 gpm (handshower) 2.5 gpm

FINISHES

Standard

Polished chrome (pc)

Custom

15 custom finishes available

(ask your local Aquabrace authorized dealer for details)

Parts list			
ELEM	CODE	DESCRIPTION	QT
1	AC0012509	Knob for hand shower Ø30 H20	1
2	AC0010529	Upper plug hand shower	1
3	AQ0012176	Inox screw M3x6 ISO 7046	1
4	AS0010528	Connection piece for hand shower	1
5	AQ0004630	OR 17,16x1,78 NBR 70 SH	5
6	AC0011852	Hand shower body Ø32 H62	1
7	AQ0013936	ABS gasket support	1
8	AQ0013935	ABS gasket support	1
9	AQ0013934	Gasket	1
10	AC0010699	Connection piece for hose	1
11	AQ0015040	Grey nylon hose M15x1 G1/2" cone DN8 L110	1
12	AC0012501	Insert Ø32 M28x1,5 H15	1
13	AQ0009982	OR 22x1 NBR 70 SH	1
14	AQ0014851	Marble cover Ø350 H50 marquinia's black	1
15	AQ0010948	Inox screw M5x25	6
16	AC0012510	Base for headworks 95x55x98	1
17	AS0012511	Connection piece G1/2" Ø12 (2001015)	8
18	AS0012512	L connection piece G1/2" Ø12 (2014012)	6
19	AQ0009742	Ceramic headwork 3/4" R	2
20	ACH012513	Handle Ø26 H45 stamped H	1
21	AQ0014670	Grubscrew M5x6 cone point	2
22	ACC012513	Handle Ø26 H45 stamped C	1
23	AC0012593	Base for diverter 60x38x90	1
24	AQ0009400	Water drain valve Ø14	1
25	AQ0004610	OR 12,42x1,78 NBR 70 SH	1
26	AS0012592	Plug Ø20 H15,2 M16x1	1
27	AQ0009417	OR 7x1 NBR 70 SH	1
28	AC0011087	Connection piece M10x1 H14	1
29	AS0011816	Screw M3 L9	1
30	AS0011840	Inox washer UNI 6592 M4	1
31	AQ0013871	Biconic rubber Ø17x3,75x8	1
32	AS0011839	Inox washer UNI 6593 M3	1
33	AS0012515	Diverter's rod Ø4 M3 L50	1
34	AQ0004600	OR 15,6x1,78 NBR 70 SH	1
35	AQ0013872	Gaco 11,8 X 3,5 NBR 70 SH	1
36	AS0011815	Diverter body M21x1 M19x1 L26,2	1
37	AQ0014936	Spring De5,4, Di4,4, Df0,5, St18, Lo25	1
38	ACT012516	Diverter knob Ø26 H35 stamped	1
39	AQ0009451	Fitting T G1/2"	1
40	AS0012517	L connection Ø12 (2004006)	1
41	AS0012518	Base for aerators 70x50x33	1
42	AQ0009068	Neostrahl LP flow straightener - TF size (01,455,00001)	2
43	AC0012586	Cover's support Ø30 M27x1 M28x1 H44,5	1
44	AQ0010664	Inox screw M5x8	4
45	AS0012519	Inset for pipe Ø120 Ø93,8 H33	1
46	AS0010301	Reduction G1/2" M G1/2" M with valve seat	2
47	AQ0001330	OR 6,75x1,78 NBR 70 SH	1
48	AS0012567	Junction M10x1 M15x1 H21,5	1
49	AS0012520	Hand shower's support M27x1 H42	1
50	AS0012568	Insert Ø30 Ø19 H40	2
51	AQ0015039	Spring De21,5, Di19,3, (option)	1
52	AS0012581	Plug for column Ø10,5 Ø8 H5,5	9
53	AQ0009819	OR 7x3 NBR 70 SH	18
54	AS0012580	Column Ø9,8 H39,5 M4	9
55	AS0012521	Plate Ø330 H42	1
56	AQ0013736	Inox screw M4x6	9
57	AQL013722	Inox screw M5x8 polish	4
58	AC0012525	Pipe Ø100 H700	1
59	ABFH84953	Inox hose G1/2" F G1/2" F L715 DN10	2
60	AS0012523	Flange Ø94,8 Ø60 H25	1
61	AQ0013722	Inox screw M5x8	4
62	AQ0014939-5	Pipe MB longlife polyurethane 98 Ø12x9 L355	1
63	AQ0014939-2	Pipe MB longlife polyurethane 98 Ø12x9 L90 mm	1
64	AQ0014939-3	Pipe MB longlife polyurethane 98 Ø12x9 L152	1
65	AQ0014939-6	Pipe MB longlife polyurethane 98 Ø12x9 L45	1
66	AQ0014939-7	Pipe MB longlife polyurethane 98 Ø12x9 L60	1
67	AQ0014939-4	Pipe MB longlife polyurethane 98 Ø12x9 L225	1
68	AQ0014939-9	Pipe MB longlife polyurethane 98 Ø12x9 L345	1
69	AQ0014939-8	Pipe MB longlife polyurethane 98 Ø12x9 L630	1
70	AQ0014966	OR 100x2 NBR 70 SH	1
71	AC0012543	Ring for pipe Ø110 H12	1
72	AC0012522	Round carter Ø149 Ø100,5 H15,5	1
73	AQ0010075	Inox plug M8x60	4
74	ABFP84959	Assymetrical hose adapter	2

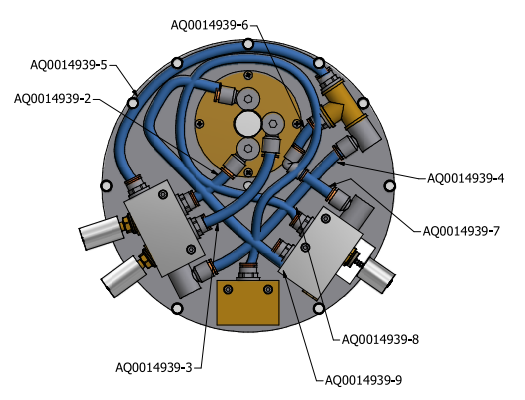
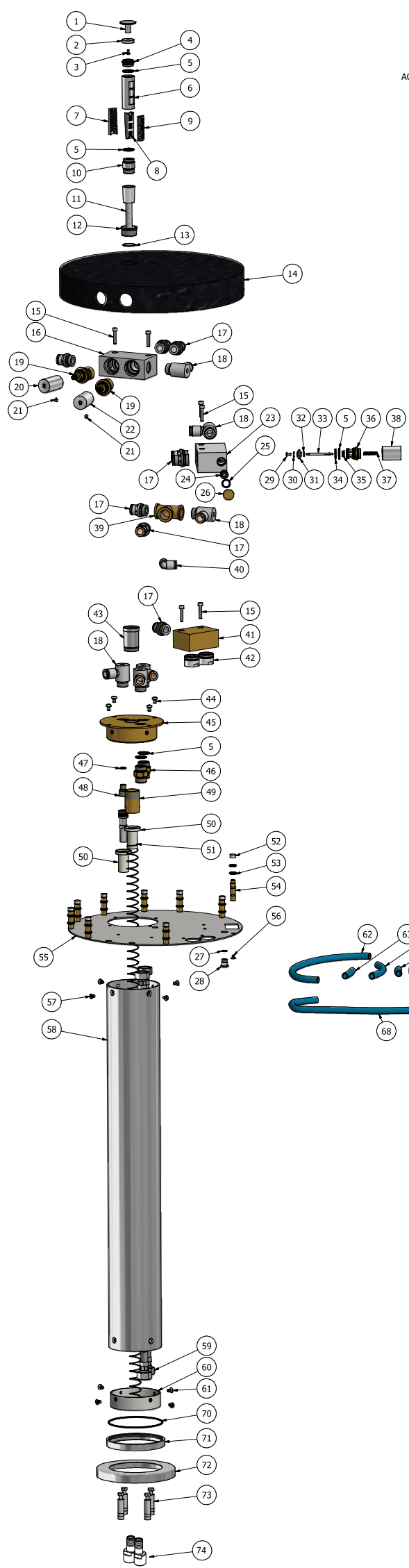


TABELLA			
CODICE TUBO	DA	A	LUNGHEZZA
AQ0014939-2	Attacco flessibile calda	Entrata vitone dietro calda	90 mm
AQ0014939-3	Attacco flessibile freddo	Entrata vitone dietro freddo	152 mm
AQ0014939-4	Uscita vitone fianco L freddo	Attacco T a L	225 mm
AQ0014939-5	Uscita vitone fianco dritto calda	Attacco T dritto	355 mm
AQ0014939-6	Uscita T	Curva L	45 mm
AQ0014939-7	Curva L	entrata deviatore fianco destro L	60 mm
AQ0014939-8	Uscita deviatore dietro dritto	Entrata aeratori	630 mm
AQ0014939-9	Uscita deviatore fianco sinistro L	Attacco flessibile doccia	345 mm

