

30 SERIES DFI663



FEATURES

Accepts custom panel and handle

Premium upper and lower rack

Top tray with Instant Lift™

Heavy-duty stainless steel construction

Nylon-coated steel racks

Condensation drying system

16 place-setting capacity

Quiet operation—44 dB(A)

8Spray™ wash system

Hidden controls

LED display

Delayed start

ADA height compliant

ACCESSORIES

Stainless steel front panel with tubular or pro handle

Stainless steel tubular or pro handle

Accessories available through an authorized Asko dealer. For local dealer information, visit the where to buy section of our website, askona.com.



PROGRAMS

- Normal Wash
- Eco Wash
- Sanitation Wash
- Time Program
- Plastic Wash
- Hygiene Wash
- Crystal Glass
- Lower Half Wash
- Upper Half Wash
- Self-Cleaning
- Rinse and Hold

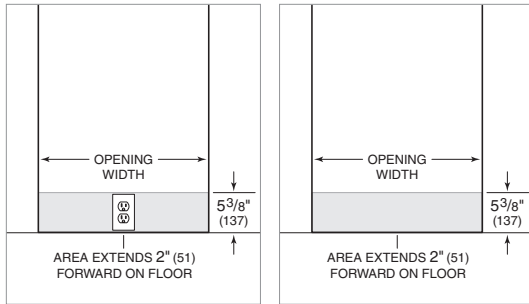
PRODUCT SPECIFICATIONS

Model	DFI663
Width	23 ⁵ / ₈ "
Height	32 ³ / ₄ "*** – 34 ³ / ₄ "
Depth	22"
Door Clearance	24 ⁵ / ₈ "
Weight	115 lb
Electrical Supply	115 VAC, 60 Hz
Service	15 amp dedicated circuit
Receptacle	3-prong grounding-type
Power Cord	4'
Water Connection	6" PEX tubing with 3/8" NPT female connection
Drain Connection	5' corrugated tubing
Pressure	4.2–140 psi

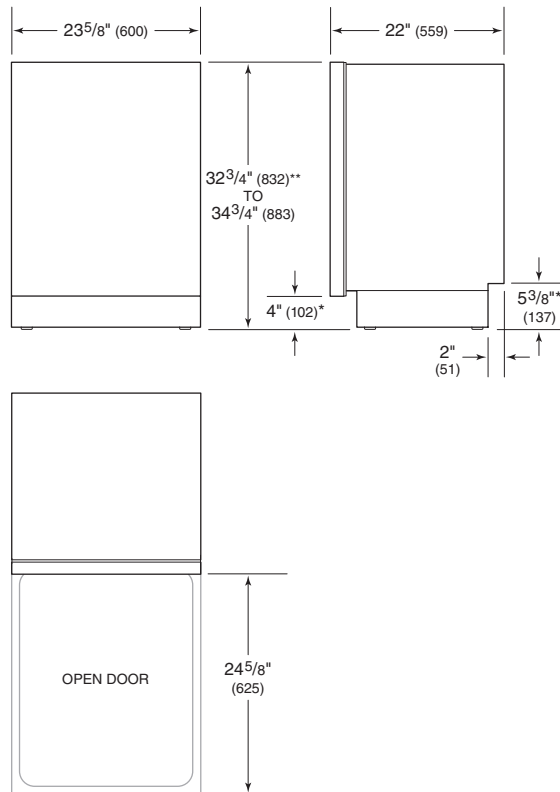
Product dimensions do not include panel and handle.
Dimensions will vary with panel thickness.

Electrical supply, plumbing supply, and drain should be located in an adjacent cabinet. If not, they must be located within the shaded area shown in the illustrations below.

ELECTRICAL | PLUMBING

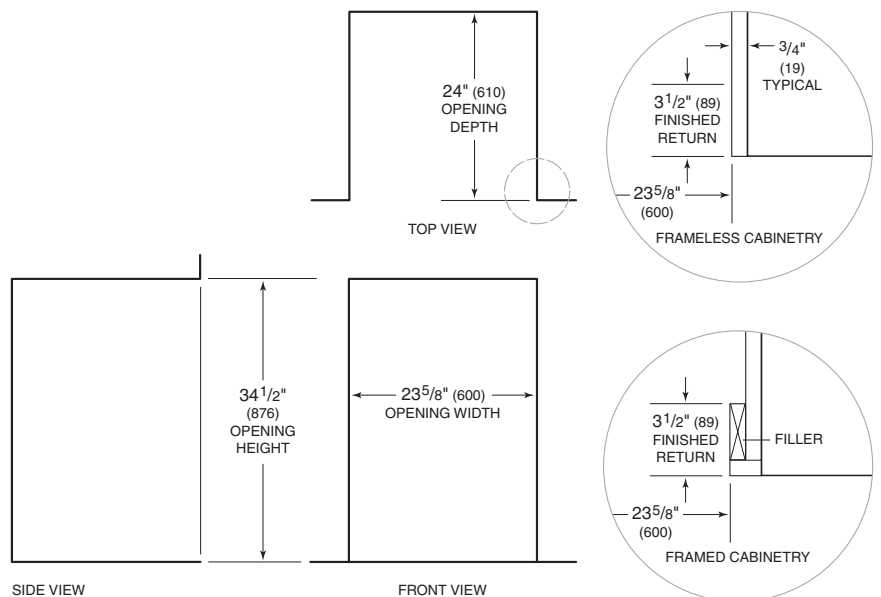


DIMENSIONS



*Dimension will vary with product height.
**Can be reduced to 32¹/₄" (819).

INSTALLATION



NOTE: 3¹/₂" (89) finished returns will be visible and should be finished to match cabinetry.