

Tools:



Adjustable Wrench



Plumbers Putty



Teflon Tape



Rags



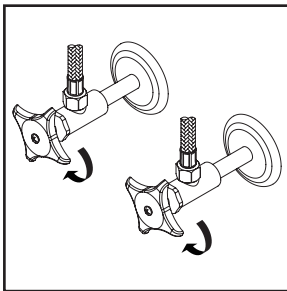
Warnings and Notes:

Check with local plumbing code requirements before installation. This product should be installed by a local listed plumber.

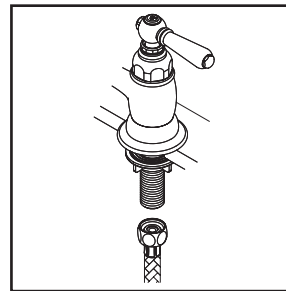
Do not use plumbers putty on threads.

Installation Steps:

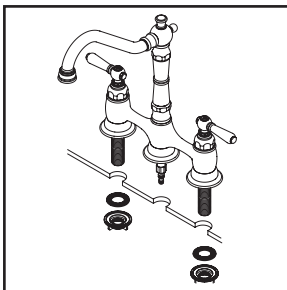
Two Handle Kitchen Faucet



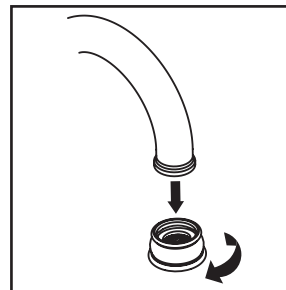
(1) Shut off the water supply. Remove old faucet. Clean mounting surface in preparation for new faucet.



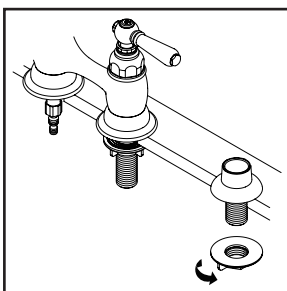
(5) When using stainless steel braided faucet supply hose; this faucet requires one end of the supply hose to have a 1/2" female IPS connection. The other end of this supply hose must match the thread on the water supply valve under your sink. Once you've identified the required size, carefully follow the manufacturer's installation instructions for each hose.



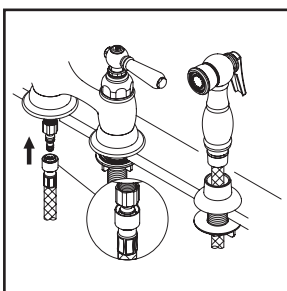
(2) Apply adequate plumbers putty along the boundary of base gasket. Align faucet with mounting holes and place faucet on the sink. Slide washers on shanks and secure the locknuts to the shanks from underneath the sink.



(6) Important: After installation is complete, remove the aerator. Turn on the water and allow both hot and cold water to run for at least one minute each. While water is running, check for leaks. Turn off the water and replace the aerator when finished.



(3) For faucet with side spray, place side spray holder on mounting hole. Tighten locknut from underneath the sink to secure side spray holder.



(4) Guide the side spray hose through the side spray holder. Insert the side spray hose quick connect adapter into the faucet outlet hose end, push until a "click" is heard. Pull side spray hose downward to test engagement.

Model Number: 105MA2

* Note: Please specify finish/color when ordering.

	ITEM #	DESCRIPTION
A	X-1200026C, H*	Lever Handle-Cold, Hot
B	X-4900130	Bonnet Nut
C	X-3900004C, H	Ceramic Stem-Cold, Hot
D	X-4200063*	Escutcheon and Gasket
E	X-4900008	Mounting Kit
F	X-4900004	Supply Nuts
G	X-2200013*	Americana Spout
H	X-4200016	Diverter Piston
I	X-4200202*	Side Spray Assembly
1	X-4900042C, H*	Handle Button-Cold, Hot
2	X-4900043	Handle Screw
3	X-4900091*	1.5 GPM Aerator
4	X-4900012	Spout O-Rings
5	OP-420083	Quick Connect Adapter

