

Dial[®]

Condensate Pump



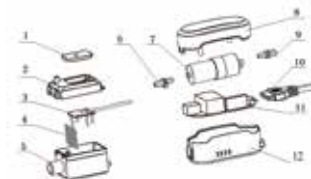
OPERATION MANUAL

Safety and Pump Application

- Disconnect power supply to the installed unit (e.g. mini-split air conditioning unit) and to the pump before installing, removing or servicing the pump.
- This pump is certified for water applications only.
- This pump cannot be used to service swimming pool or marine applications.
- If the electrical or communication cable is damaged, it must be replaced with a cable from the manufacturer or an authorized service agent.
- Do not operate this pump dry (without water).
- Always place the reservoir flat-side down on a level horizontal surface.
- The pump is intended for use in indoor light commercial and residential environment. It is not to be used in an industrial setting and oily or dusty environment.
- This pump cannot be used outdoors.
- This pump is not a submersible pump.



1. Pump components



NO	Description	NO	Description
1	Insert board	7	Motor
2	Reservoir cover	8	Pump cover
3	Filter	9	Outlet port
4	Signal pin	10	Power cable
5	Reservoir	11	PCB
6	Inlet port	12	Pump cover

2. Dimensions

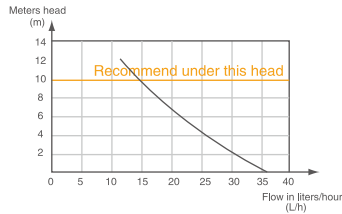


3. Technical specification

Model	CP-M S-36LH-110-230 CP-M S-18LH-110-230
Voltage	100-230V / 50-60Hz
Suction Lift	Max. 2m (6.5ft)
Discharge Head	Max. 10m (33ft)
Flow Rate	Max. 36L/h (9.6 GPH)
Tank Capacity	35cc
Mini Splits up to	15KW (45,000 btu/hr)
Sound Level @ 1m	21dB (A)
Ambient Temperature	0°C - 50°C

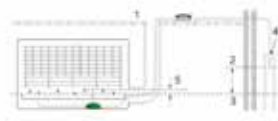
4. Maximum recommended head(m)

FLOW RATE:



5. Preventing siphoning advice

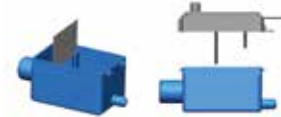
Cut discharge tube above water level of evaporator tray and direct end into large pipe, allowing air break (as following picture).



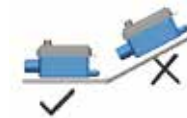
- ① False ceiling
- ② End of discharge tube
- ③ Water level in drain tray
- ④ Air break
- ⑤ Top of breather tube

6. Installation

① Ensure correct assembly of the pump cover and signal pin, with the filter in place and the lid clipped firmly on reservoir.



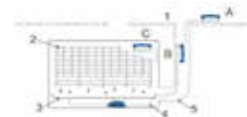
② Secure reservoir horizontally using velcro strips. Next, attach drainage hose from air conditioning unit to drainage inlet.



③ Fit breather tube to inlet on reservoir lid.



④ Install the pump unit above the ceiling where possible.



- ① False ceiling
- ② Evaporator coil
- ③ Condensate drain tray
- ④ Vinyl tube
- ⑤ Conduit

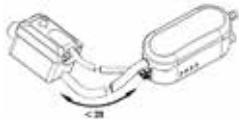
⑤ Anti-vibration assembly.



⑥ Note direction of water flow.



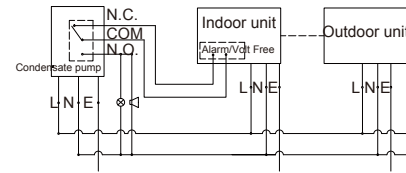
⑦ Connect the 9mm o/d x 6mm i/d tube from the reservoir to the pump. Ensure the length of the tube is less than 2 meters (6.5ft) and secure with cable ties.



⑧ Connect your 9mm o/d x 6mm i/d vinyl discharge tube to the outlet barb on the pump and secure with a cable tie. Direct discharge tube to a proper drainage outlet. Ensure discharge tube does not have kinks or constrictions.



⑨ A high-level alarm switch should be wired into the air conditioning signal wire, to stop the operation of the air conditioning unit in the event of a pump failure.



Power:

(L) Live: Brown

(N) Neutral: Blue

(E) Earth: Green&Yellow

Alarm/volt free:

(N.C.) Normally closed : Green

(COM) Common: Red

(N.O.) Normally open : Violet

CAUTION

Use the wiring diagram above to ensure correct wiring connection.

⑩ Test pump operation by pouring water into evaporator tray. Check for leaks.

