

**Replacement parts available
by visiting web site**

www.elkayusa.com

ELKAY LIMITED LIFETIME FAUCET WARRANTY ON RESIDENTIAL FAUCETS

Limited Lifetime Functional and Finish Warranty

Elkay warrants to the original consumer purchaser that the Elkay faucet purchased will be free from defects in material and workmanship for as long as the original consumer purchaser owns the faucet. Elkay will, at its option, supply replacement parts (or if no longer available a comparable product) if the faucet fails due to a defect in material or workmanship. This warranty does not apply in the event of product surface damage caused by abuse, misuse or improper care and maintenance. This warranty excludes damage caused by harsh or abrasive cleaners and/or materials. This warranty excludes all industrial, commercial and business use, whose purchasers are hereby extended a limited lifetime on mechanical parts and 5 years on finish. Product replacement does not include transportation cost or labor installation cost. Elkay reserves the right to examine product in question and its installation prior to replacement.

OTHER WARRANTY CONDITIONS ON FAUCETS

Our warranty does not cover product failure or damage caused by abusive treatment, misuse, environmental factors, improper care and cleaning, or damage due to handling or faulty installations. This warranty is extended only to the original consumer purchaser of the product. This warranty does not cover shipping costs, labor costs, or any other charges for such items as installation or replacement of the sink, diagnosis or replacement of any faucet or component part, or any other expense or loss.

All incidental or consequential damages are specifically excluded. No additional warranties, express or implied are given. Any implied warranty, including one of merchantability or fitness for a particular purpose, is limited to the duration of this written warranty.

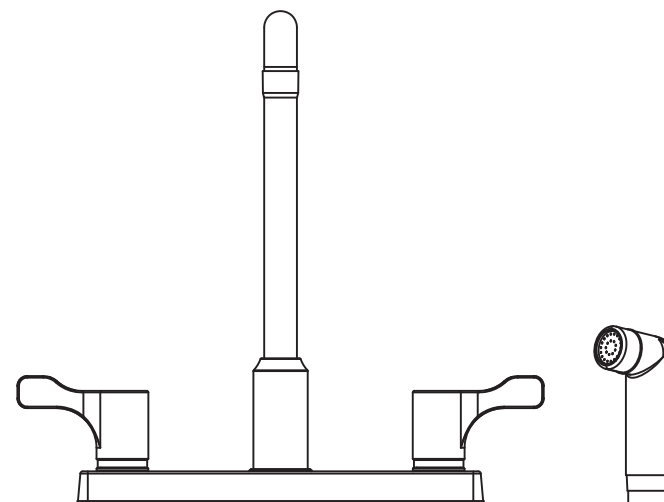
Some states do not allow the exclusion or limitation of incidental or consequential damages or limitations on how long an implied warranty lasts, so the above limitations or exclusions may not apply to you.

This warranty gives you specific legal rights, and you may also have other rights which vary from state to state.

TO OBTAIN SERVICE UNDER WARRANTY

1. Write to: Elkay
Attention: Consumer Services
2222 Camden Court
Oak Brook, IL 60523
2. Include a letter containing the following information:
 - a. Date of purchase and installation
 - b. Description of nature of defect
 - c. Model number or description of model and/or component part if possible.

How to Install a Top Mount Two-Handle Faucet



Install Spray and Hose (if included)

1. Remove locknut and washer from sprayer base assembly and place assembly in far right hole of sink deck. Reassemble washer and locknut on shank from under sink. Tighten.
2. Insert hose through sprayer base assembly then route back up through the center hole for the faucet. Thread hose onto faucet and tighten.

Install Faucet

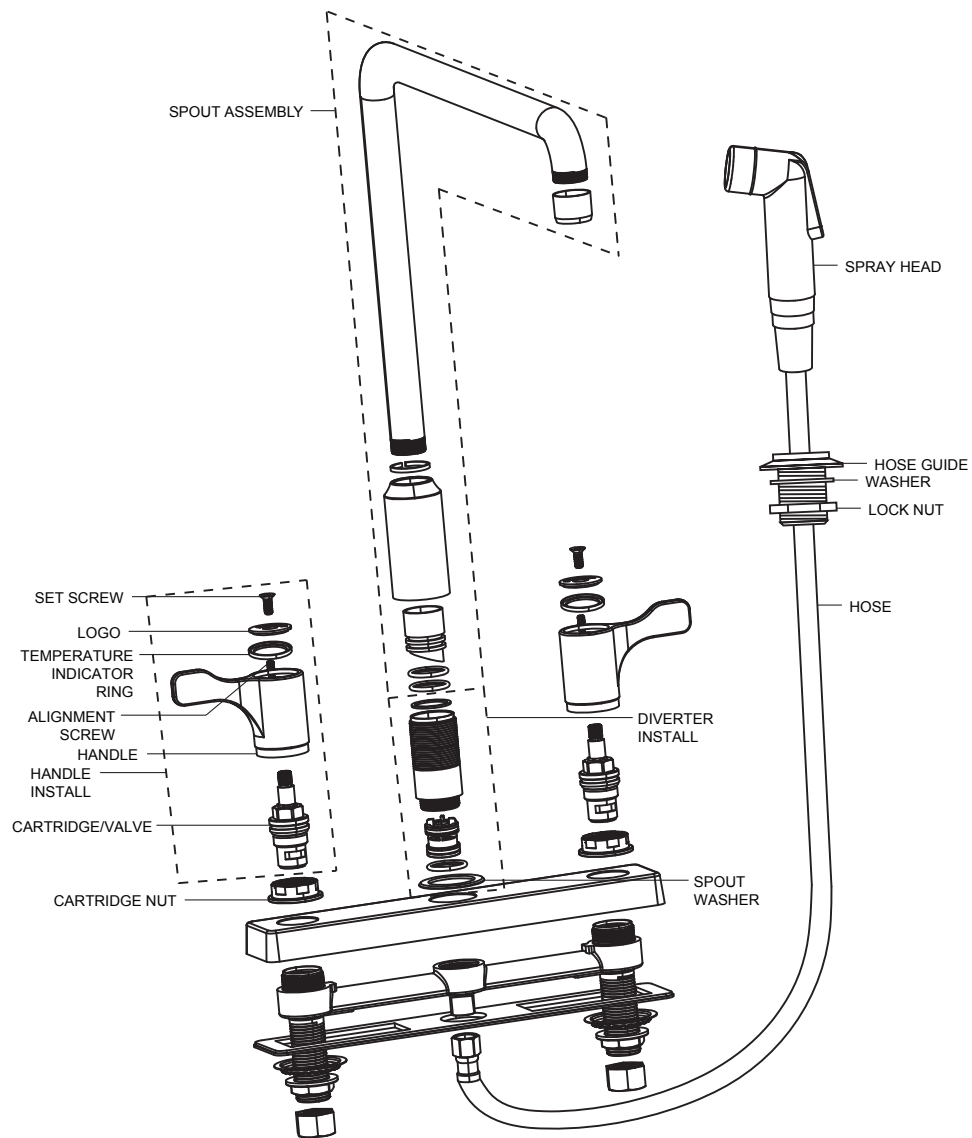
1. Be sure mounting surface is clean and dry. Apply plumbers putty or silicon sealer to bottom of escutcheon gasket.
2. Place faucet shanks through holes in sink.
3. Fasten faucet to deck from underneath sink using washers and nuts. Tighten.
4. Clean extra plumbers putty or silicone from around escutcheon.
5. Connect supply lines to faucet shanks and tighten.
6. Place washer on the waterway spout connector and thread spout assembly by hand until snug.
7. Remove aerator from spout and Flush water lines to remove dirt and sediment from water lines. Replace aerator.

Install Handles (if required)

1. Ensure cartridge (valve) is in the "off" position. (Fully counter clockwise for Cold and Fully clockwise for Hot.)
2. Insert handle over cartridge stem
3. Insert alignment screw in handle hole towards back of sink. Screw in only half way.
4. Place Red Temperature Indicator Ring in the top of the hot side handle and the Blue ring in the top of the Cold side handle.
5. Place Logo part in top of both handles so logo can be read from front of sink.
6. Thread handle set screw into each handle and tighten.

Change Diverter Valve (If Side Sprayer Equipped)

1. From top of sink, Unscrew spout and pull upward to remove.
2. Unscrew waterway spout connector from main waterway (Wrench flats provided).
3. Pull diverter valve out of waterway and replace with new diverter in same orientation.
4. Thread waterway spout connector into main waterway and tighten.
5. Thread spout assembly on waterway and hand tighten.



Elkay recommends installation by a licensed plumber.