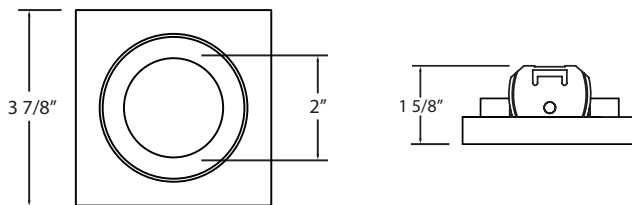




29931-05 | 3" CHROME SQUARE

PRODUCT DIMENSION:



BULB OPTIONS:		BULB OPTIONS:	
MR16		GU10	
NO. OF BULBS:	1	NO. OF BULBS:	1
BULB TYPE:	MR16	BULB TYPE:	GU10
VOLTAGE:	12V	VOLTAGE:	120V
MAX. WATTAGE:	50W	MAX. WATTAGE:	50W

FINISHES:

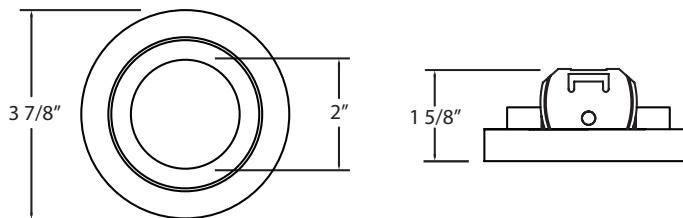


-05 Chrome

*LED COMPATIBLE

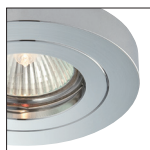
29932-05 | 3" CHROME CYLINDER

PRODUCT DIMENSION:



BULB OPTIONS:		BULB OPTIONS:	
MR16		GU10	
BULB TYPE:	MR16	BULB TYPE:	GU10
VOLTAGE:	12V	VOLTAGE:	120V
MAX. WATTAGE:	50W	MAX. WATTAGE:	50W

FINISHES:



-05 Chrome

*LED COMPATIBLE

HOUSING OPTIONS (SOLD SEPARATELY)

Refer to page 85-86 for housing specification

MR16 REMODEL



MAGNETIC TRANSFORMER

Cut Hole:
3 1/4"

Dimension:
11 3/4"L x 3 1/2"W x 4 1/8"H

NEW CONSTRUCTION PLATE

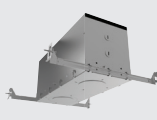


VHG-4N01-00

Cut Hole:
3 1/4", 3 1/2", 4 3/8"

Dimension:
15 5/8"L x 6 1/8"W x 1 1/4"H

INSULATED CEILING BOX



VHG-4I01-00

Cut Hole:
3 1/4", 3 1/2", 4 3/8"

Dimension:
15 5/8"L x 6 1/8"W x 7 1/2"H

GU10 REMODEL



GU3-00

Cut Hole:
3 1/4"

Dimension:
11 3/4"L x 3 1/2"W x 4 1/8"H

NEW CONSTRUCTION HOUSING

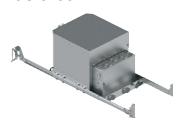


GUC3-00

Cut Hole:
3 1/4"

Dimension:
12 1/8"L x 7 5/8"W x 4"H

INSULATED CEILING HOUSING



GU13-00

Cut Hole:
3 1/4"

Dimension:
12 5/8"L x 9"W x 7 3/4"H