



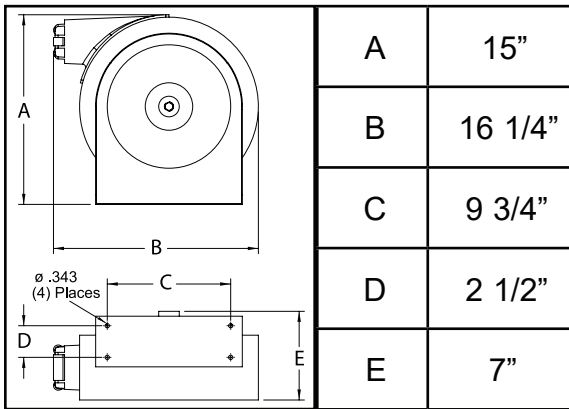
# Operating Instructions

Model: 32027

Over Head Mounted Spring Driven Reel



## Dimensions



## SAFETY

1. Do not use reel at higher pressures or temperatures than listed on the back of this bulletin.
2. Remove all spring tension before beginning disassembly process.

### INSTALLATION:

A flexible hose connection must be used between the hose reel inlet and the source of supply to prevent possible misalignment and binding. Turn over the page for more detailed instructions and drawing configuration.

### MOUNTING:

This reel is configured to be over head mounting. The hose reel is equipped with a universal mounting bracket so that it can be mounted on the floor, wall or ceiling. In order to modify it's factory set position the hose guide arm can be moved to the position desired by removing the 1/4-20 hex nuts (4) fastening the hose guide enclosure to the reel back cover. Shift the hose guide enclosure to the desired position and replace the 1/4-20 hex nuts. NOTE: For proper installation in wall mount applications, ensure reel is mounted with inlet on the right as you are facing the reel. Failing to do so could cause latching issues.

### LUBRICATION:

Hose reel spring and bearings are factory lubricated and require no further lubrication.

### REPLACING HOSE:

1. Remove 1/4-20 hex nuts (4) which fasten the hose guide enclosure to the reel back cover and pull off the enclosure.
2. Wind spool flange clockwise-facing swivel-until spring is tight.
3. Back off three turns and latch.
4. Insert hose through roller guide.
5. Connect hose fitting to swivel joint and secure hose with clamps.

### ADJUSTMENTS:

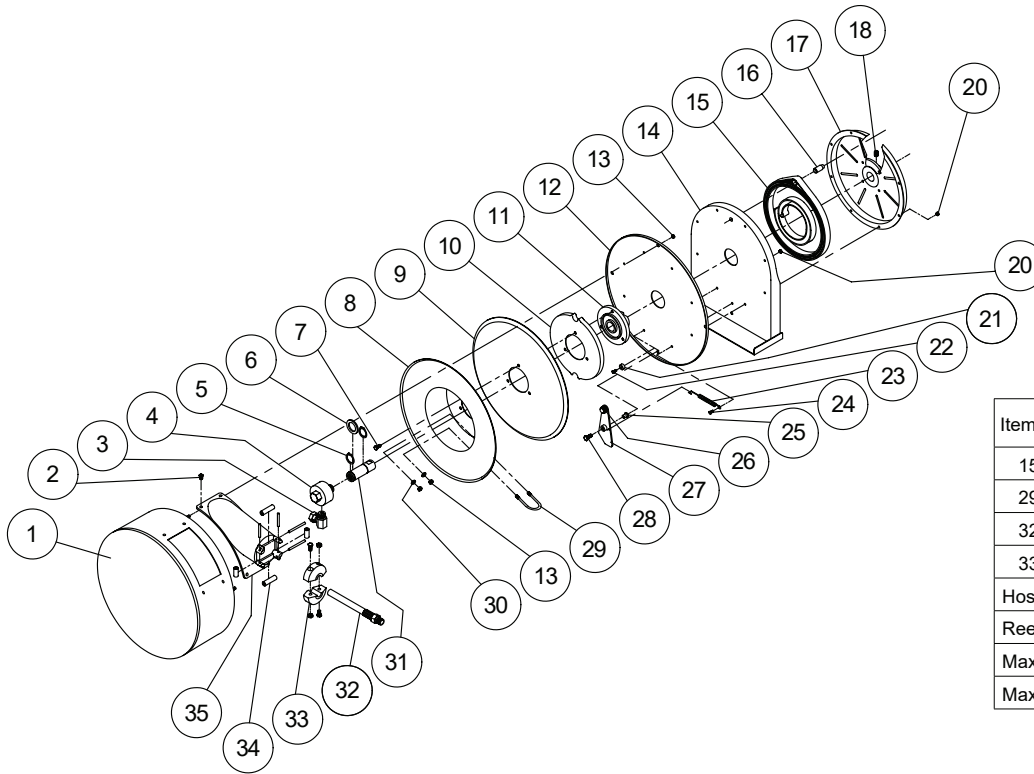
To adjust spring tension, add or remove wraps of hose from the spool, one wrap at a time until desired tension is obtained.

### REPAIRS:

Extensive repairs should be performed only by an authorized serviceman or factory to avoid damage which may void your warranty. Remove all spring tension before beginning disassembly process.

Part No.75029 Rev.A

# Model: 32027 Over Head Mounted Spring Driven Reel



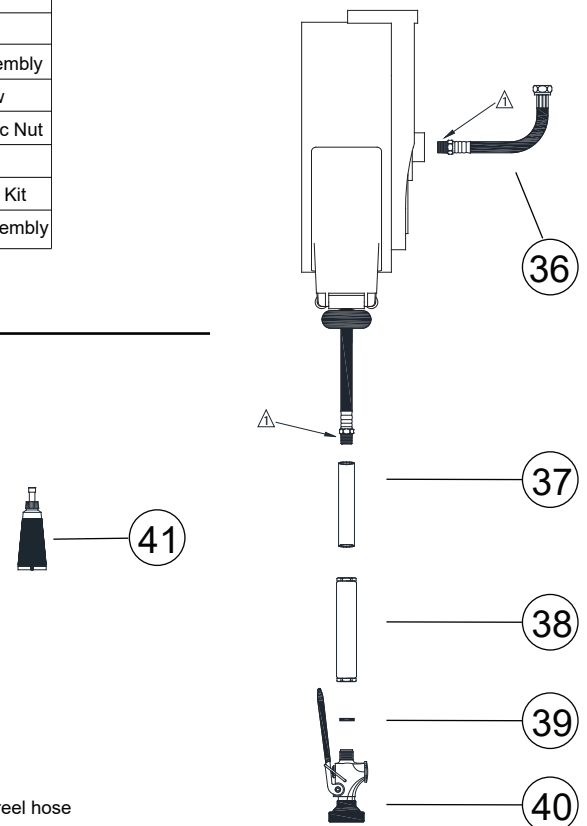
Item #	Description	# Req.	32027
15	Drive Spring Assembly	1	
29	U-bolt Hose Clamp	2	
32	Hose Assembly	1	75079
33	Bumper Stop Assembly	1	2980-R027
Hose I.D. and Length			3/8" x 30'
Reel Inlet Connection			3/8" FPT
Max. Operating Pressure			200 PSI
Max. Operating Temperature			160 °F

Item #	# Req.	Description	Item #	# Req.	Description	Item #	# Req.	Description
1	1	Case and Cover Assembly	11	1	Spring Arbor	23	1	Latch Spring
2	4	10-32 x 3/8" Screw	12	1	Reel Cover	24	7	10-32 x 1/2" Screw
3	1	Swivel Union	13	4	1/4-20 Zinc Nyloc Nut	25	4	Latch Bushing
4	1	Swivel Assembly	14	1	Base Assembly	26	1	O-ring
5	2	1" Snap Ring	16	1	Spring Case Stud	27	1	Latch Plate Assembly
6	2	Spacing Washer	17	1	Spring Case Assembly	28	1	10-32 x 1" Screw
7	3	1/4-10 x 5/8" Screw	18	1	3/8-16 x 1/2" Set Screw	30	2	1/4-20 Zinc Nyloc Nut
8	1	Sheave Flange	20	8	10-32 x 3/8" Nyloc Nut	31	1	Main Shaft
9	1	Sheave Disk	21	1	Latch Bumper	34	1	Guide Roller Pin Kit
10	1	Latch Cam	22	1	10-24 x 3/8" Screw	35	1	Hose Guide Assembly

## Model: 74988 Reel Kit Pro Spray Valve

Item	# Part	# Req.	Description
36	75066	1	Hose RR 3/8m x 1/2f x 1 1/2 ft
37	2980-R002	1	Tube vinyl clear 6 inch
38	2913-3/8	1	Handle 3/4-14f X 3/8f
39	2922-5000	1	Gasket Handle
40	2990	1	Pro Spray Valve
41	3298	1	PST Thread Sealant

⚠ NOTE: Apply PST or Plumber Tape on the following locations to prevent any leaks.



1. Connect the lead-in line (36) to the reel (32027) inlet located on the right-hand side of the hose reel, by applying PST (41) or plumbers tape on the male 3/8" NPT threads on the lead-in line (36) and thread it to the reel (32027) using a wrench to support the swivel while tightening the lead-in line.
2. Connect the 1/2" female end of the lead-in line (36) to the water supply using PST (41) or plumbers tape and tighten.
3. Turn on water supply and flush the reel line to remove any debris from the reel for a few seconds and then turn off water supply.
4. Slide the clear vinyl tube (37) over the reel hose up to the bumper (33).
5. Attach the handle (38) to the reel hose (32). By applying PST (41) or plumbers tape on the 3/8" NPT male threads on reel hose and tighten.
6. Insert the gasket handle (39) into the handle (38) and then connect the pro spray valve (40).
7. Turn water supply on and check for leaks.