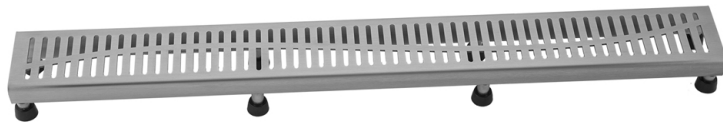


## 24" Channel Drain Slotted Grate

**Model #: 6210-24-**

### FEATURES:

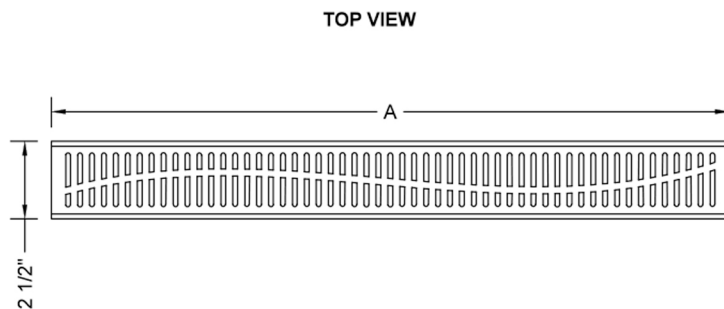
- 304 stainless steel construction
- Nominal Size: 24"
- Key included to remove grate for easy cleaning
- Adjustable feet for perfect installation
- JACLO channel drain body sold separately
- Standard finishes: BSS & PSS. Additional finishes available: BKN, BU, EB, JG, MBK, ORB, PB, PG, SB, SDB, SG, TB, WH. Call for pricing and availability



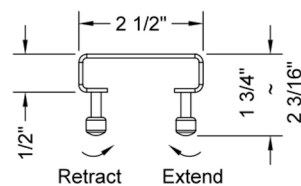
### AVAILABLE FINISHES:

Polished Stainless (PSS)    Brushed Stainless (BSS)

### SPECIFICATION DRAWING:



JACLO SLOTTED GRATE ONLY		
PART. #	DESCRIPTION	A
6210-24-XXX	SLOTTED GRATE	22 1/4"
6210-32-XXX	SLOTTED GRATE	30 1/8"
6210-36-XXX	SLOTTED GRATE	34 1/8"
6210-42-XXX	SLOTTED GRATE	42
6210-48-XXX	SLOTTED GRATE	46"
6210-60-XXX	SLOTTED GRATE	57 3/4"



### COMPLIANCES:

Complies with: ASME A112.18.2-2015/CSA B125.2-15