



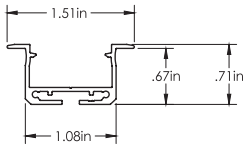
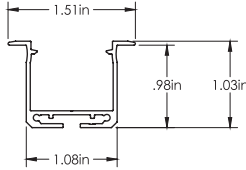
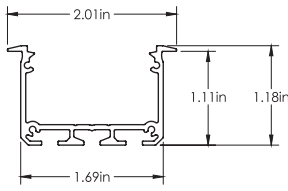



# TE Enhanced Series Recessed Mount

1TEC2STRC8SIL/1TEC2DWRC8SIL/  
1TEC3DWRC8SIL

PROJECT:	PRODUCT #:
TYPE:	COMMENTS:
PREPARED BY:	

Recessed Mount			
	Standard	Deep	Deep/Wide
Channel			
Installation View			
Tape Capacity	• Utilizes two strips of LED tape		• Utilizes three strips of LED tape
Description	<ul style="list-style-type: none"> <li>• Flat recessed installation (requires fabricating a recess to mount flush with surface)</li> </ul> <p>Ideal for:</p> <ul style="list-style-type: none"> <li>• Recessed under cabinets</li> <li>• Recessed into shelving, or under an island</li> <li>• Recessed wall, ceiling or niche accent</li> <li>• Miter cut and connect with 1TEA Connector accessories for custom shapes (<i>See below</i>)</li> </ul>		
Dimensions			
<b>A La Carte</b> <b>To Build A Channel</b> With the TE Enhanced Series, you build your own channel system. Tape Light Sold Separately.			
Channels 8ft	<b>1TEC2STRC8SIL</b>	<b>1TEC2DWRC8SIL</b>	<b>1TEC3DWRC8SIL</b>
Lenses 8ft	<b>1TEL0028WHO</b> 2-Tape Wide Flat Lens, White Opaque		<b>1TEL0038WHO</b> 3-Tape Wide Flat Lens, White Opaque
End Caps 10 total	<b>1TEE2STRCSSIL</b> All with Holes for Wires	<b>1TEE2DWRCSSIL</b> All with Holes for Wires	<b>1TEE3DWRCSSIL</b> All without Holes – Use T-Slot for Wire Exit
Mounting Clips 10 total	<b>1TEMSC1RC</b> Spring Clip		
Accessories 1 each (connectors include hex screws and hex key)	<b>1TEA180HCONN</b> Straight Connector Bracket <b>1TEA090VCONN</b> 90° Vertical Connector Bracket <b>1TEA090HCONN</b> 90° Horizontal Connector Bracket <b>1TEA120HCONN</b> 120° Horizontal Connector Bracket		

Compatible with Kichler Standard Output (1.5W/ft) and High Output (3W/ft) LED Tape Light.

# TE Enhanced Series

## Recessed Mount

1TEC2STRC8SIL/1TEC2DWRC8SIL/1TEC3DWRC8SIL



1TEC2STRC8SIL



1TEC2DWRC8SIL



1TEC3DWRC8SIL



1TEL0028WHO



1TEL0038WHO



1TEE2STRCSSIL



1TEE2DWRCSSIL



1TEE3DWRCSSIL



1TEMSC1RC



1TEA180HCONN



1TEA090VCONN



1TEA090HCONN

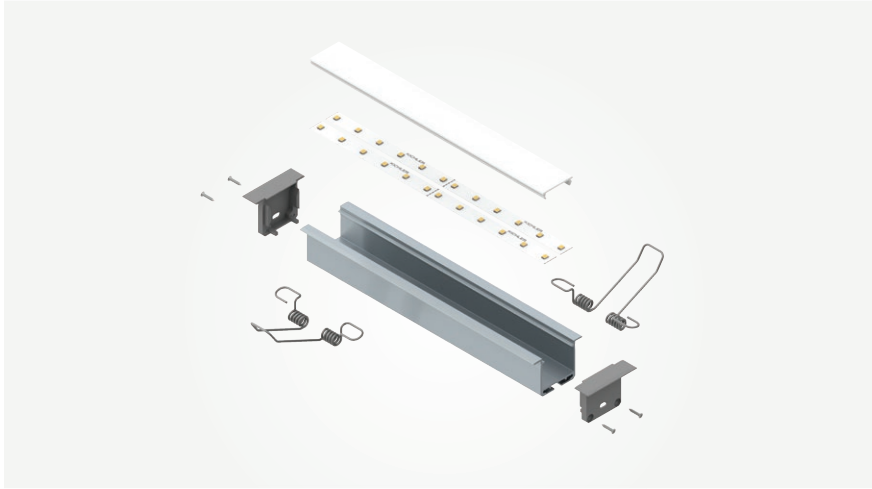


1TEA120HCONN

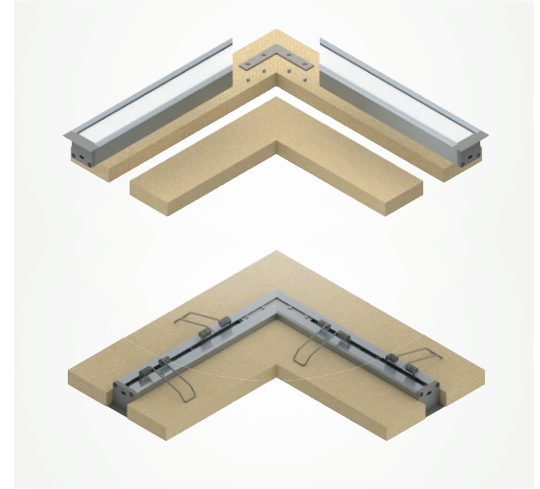
# TE Enhanced Series Recessed Mount

1TEC2STRC8SIL/1TEC2DWRC8SIL/1TEC3DWRC8SIL

## EXPLODED VIEW



## INSTALLATION VIEW



## COMPATIBILITY

TE Channels are compatible with Kichler® 8T, 6T and 4T Standard Output (1.5W/ft) and High Output (3W/ft) LED Tape Light. Below are compatible connectors.

Tape Connector / Channel Compatibility		8T CONNECTOR ACCESSORIES								6T/4T
		8T1TTF1WH	8T1TTF2WH	8T1TTF3WH	8T1TTF4WH	8T1TTR1WH	8T1TWF1WH	8T1TWR1WH	8T1TWR5WH	1SXXX 1CXXX 1ICXXX *
<p>● Compatible ● Not Compatible</p> <p>● Compatible with appropriate corners fabricated with channel</p>										
Recessed Mount – Deep <b>1TEC2DWRC8SIL</b>		●	●	●	●	●	●	●	●	●
Recessed Mount – Deep/Wide <b>1TEC3DWRC8SIL</b>		●	●	●	●	●	●	●	●	●
Recessed Mount – Standard <b>1TEC2STRC8SIL</b>		●	●	●	●	●	●	●	●	●

\*Due to the width of the 1SL, 1C and 1IC connectors, soldered connections are recommended.

## NOTES:

---



---



---



---