

**SUBMITTAL SHEET**

JOB NAME		ITEM TAG
JOB LOCATION		PART NUMBER
CONTRACTOR	DATE	
ENGINEER APPROVAL	DATE	

**QUARTER-TURN MNPT BOILER DRAIN**

**R-670**

Quarter-turn, bubble-tight positive shutoff.  
 Forged brass construction eliminates casting-related leaks.  
 More durable than traditional stop-type valves.  
 Compact design is ideal for confined applications.  
 Superior flow characteristics.

All 3/4" GHT (garden hose) outlets accept 3/4" hose-thread-mounted vacuum breakers\*, including our Models T-553NL, T-553CNL, T-554, T-555, T-556, T-557 and T-557C.

Available in nominal 1/2" and 3/4" MNPT inlet x 3/4" MGHT outlet sizes. The 1/2" model is combination 1/2" MNPT and 1/2" Sweat.

*\*These vacuum breaker models are not included with the valves and do not appear on this submittal sheet. Please check your local backflow prevention code requirements and contact Legend for additional submittal information.*

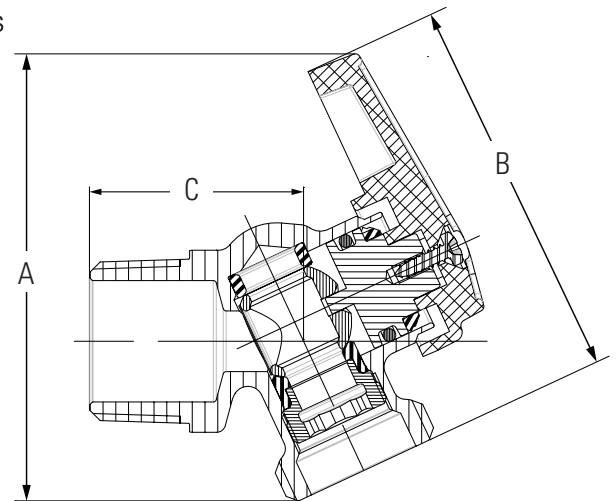
**Working Pressure, Non Shock (PSI)**

Cold working pressure (CWP): 200 p.s.i.  
 Saturated steam (WSP): Not suitable for steam service

- CSA certified for Canadian plumbing applications.
- End connections comply with the following specifications:  
 ANSI / ASME B1.20.1 (MNPT)  
 ANSI / ASME B1.20.7 (Male garden hose)
- Manufactured in an ISO accredited facility



**Pictured Model R-670**

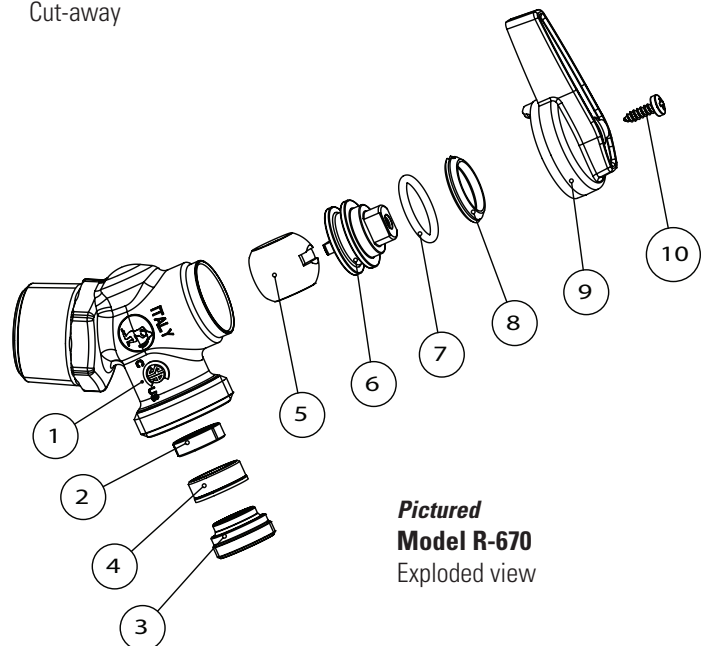


**Pictured Model R-670**  
Cut-away

MATERIAL SPECIFICATION		
PART	MATERIAL	SPECIFICATION
1	Body	Forged brass ASTM B124 C37700
2	Upstream seat	Polyamide PA6 Nylon*
3	Seat retainer	Forged brass ASTM B124 C37700
4	Downstream seat	PTFE Telfon*
5	Ball	Forged brass (chrome plated) ASTM B124 C37700
6	Stem	Forged brass ASTM B124 C37700
7	Stem O-ring	EPDM Commercial grade
8	Anti-friction washer	Acetal resin POM, commercial grade
9	Handle	Aluminum Commercial grade
10	Handle fastener	Carbon steel Commercial grade galvanized

*\*Telfon and Nylon is a registered trademark of DuPont Company.*

DIMENSIONS			
Size	A	B	C
1/2"	2.88	2.56	1.50
3/4"	2.88	2.56	1.50



**Pictured Model R-670**  
Exploded view