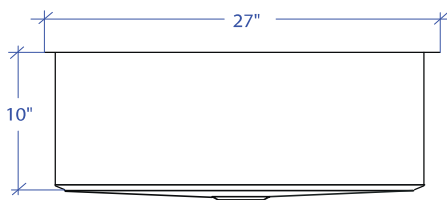
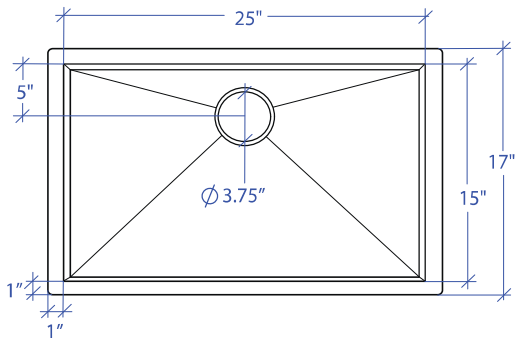


# ORION MOUS-503GDSB



\*Custom ADA compliant versions are available



## • FEATURES

16-gauge type 304 stainless steel  
Bevel basin design

## • TECHNICAL INFORMATION

External dimension: 27"Lx17"Wx10"D  
Basin dimensions: 25"Lx15"Wx10"D

## • FINISHES

Gold PVD Satin Brushed stainless steel

## • INSTALLATION OPTIONS

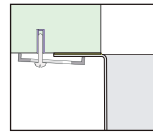
Top-mount  
Under-mount

## • MINIMUM CABINET SIZE (I.D.)

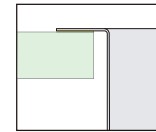
Top-mount 28"  
Under-mount 30"

## • US DESIGN PATENT D618,324 S

## • DUAL-MOUNT INSTALLATION



Under-mount

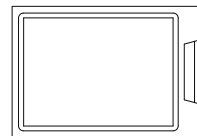


Top-mount

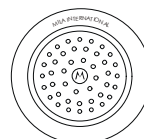
## • ACCESSORY OPTIONS



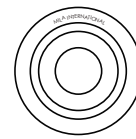
MBG-055GDSB  
Basin Grid



MCB-501BB  
Cutting Board



MKD-101GDSB  
Strainer



MDC-101GDSB  
Disposal Collar

## PROJECT INFORMATION

Project			
Date	/	/	QTY
Specifier			
Contact			
Note			