


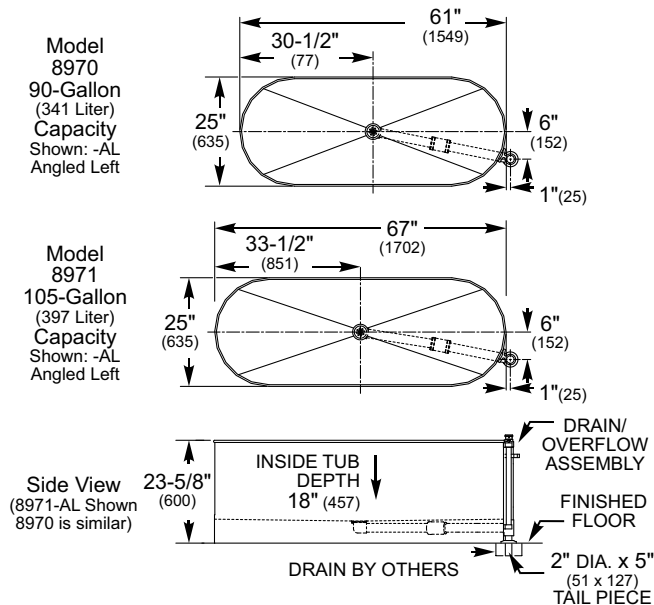
## FEATURES

- Large One-Piece Soaking Tub
- Heavy Stainless Steel Construction
- Stainless Steel is a Recyclable Metal 
- Available in Standard Capacities of 90 Gallons (341 Liters) or 105 Gallons (398)
- Reinforced Tank Rim
- Extended Skirt Conceals Internal Drain Piping
- Combination Drain & Overflow
- Custom Sizes and Features can be Fabricated  
*Please contact Neo-Metro with Custom Specs & Drawing for Quotation.*
- Optional Reclining Seat Available

**NOTE: FAUCET AND DRAIN IN FLOOR NOT INCLUDED.**



**Model 8971**  
105-Gallon (397 Liter) Capacity  
Shown: -AL Angled Left



## ORDERING OPTIONS

- 8970 Satin Finish Stainless Steel Neo-Tub  
90 Gallon (341 Liter) 60" Long (1524mm)

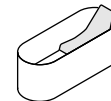
---

- 8971 Satin Finish Stainless Steel Neo-Tub  
105 Gallon (398 Liter) 66" Long (1676mm)

Either 8970 or 8971 Tubs Must Specify Drain/Overflow Assembly Configuration:

-  (-AL) Angled Left
-  (-AR) Angled Right

- RS Option - Reclining Seat



**INSTALLATION INSTRUCTIONS ARE AVAILABLE.**

**Product Specification...** Tub shall be manufactured with heavy gage, type 304 stainless steel. Construction shall be seamless welded and exposed surfaces shall be polished to a satin finish. The tub shall have a reinforced rim and be fitted with a skirt flush to the floor line. A 2" (51mm) combination drain and overflow assembly is provided. Model 8970 is 61" (1549mm) long and holds 90 gallons (341 liters). Model 8971 is 67" (1702mm) long and holds 110 gallons (398 liters).

**Plumbing Specification...** Drain in the tub floor is positioned in the center. Water drains out to the 2" (51mm) combination drain and overflow assembly positioned toward the end of the tub in Angled Right (-AR) or Angled Left (-AL) configuration. Faucet not provided.



## APPROVAL FOR MANUFACTURE

COMPANY: \_\_\_\_\_

PROJECT NAME: \_\_\_\_\_

SIGNEE'S NAME WRITTEN CLEARLY: \_\_\_\_\_

DATE: \_\_\_\_\_

AUTHORIZED SIGNATURE: \_\_\_\_\_

 **WARNING:** Cancer and Reproductive Harm - [www.P65Warnings.ca.gov](http://www.P65Warnings.ca.gov)