



OLYMPIA FAUCETS, INC.
 3325 S. Garfield Ave.
 Commerce, CA 90040
 (888) 772-7701
 www.olympiafaucets.com

INSTALLATION

Tools:



Adjustable Wrench Phillips Screwdriver Plumbers Putty Teflon Tape Rags

Model Number: K-5441

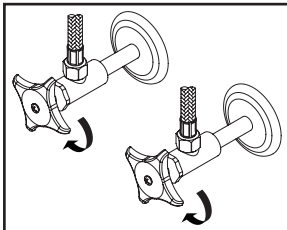
Warnings and Notes:

Check with local plumbing code requirements before installation.
 This product should be installed by a local listed plumber.
Do not use plumbers putty on threads.

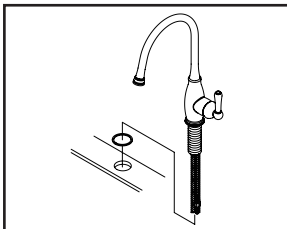


Installation Steps:

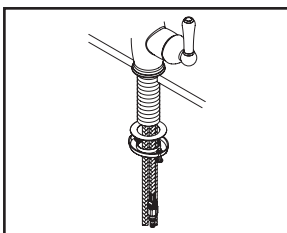
Single Handle Kitchen Faucet



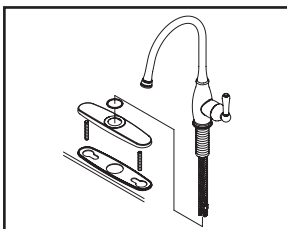
(1) Shut off the water supply. Remove old faucet. Clean mounting surface in preparation for new faucet.



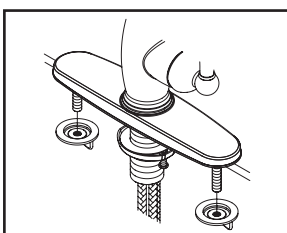
(2a) **For 1-Hole Installation:-** Ensure there is a gasket under the faucet. Place the faucet in position on the sink.



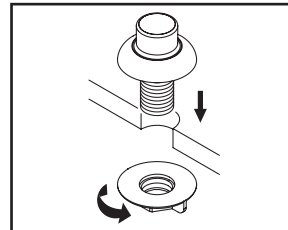
(2b) Hand-tighten locknut to the faucet shank from underneath the sink. Position faucet to desired location from top. Tighten screws on locknut with the help of Phillips head screwdriver to secure faucet.



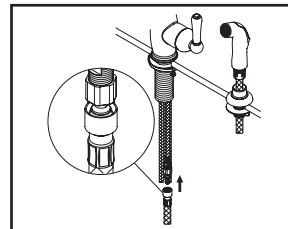
(3a) **For 3-Hole Installation:-** Thread mounting bolts to deck plate, apply plumbers putty under the base gasket, place faucet on the deck plate. Lead inlet & outlet flex hoses through center mounting hole to place faucet with deck plate and base gasket in position on the sink. Hand-tighten locknut to the faucet and tighten screws on locknut with the help of Phillips head screwdriver from underneath the sink.



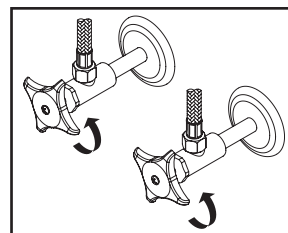
(3b) Thread and tighten both mounting nuts to mounting bolts from underneath the sink to secure faucet on the sink.



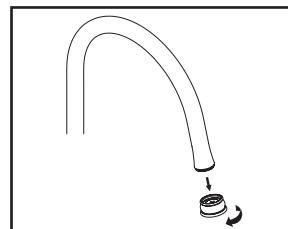
(4) Place side spray holder on mounting hole. Tighten locknut from underneath the sink to secure the side spray holder.



(5) Guide the side spray hose through the side spray holder. Insert the side spray hose quick connect adapter into faucet outlet end, push until a "click" is heard. Pull side spray hose downward to test engagement.



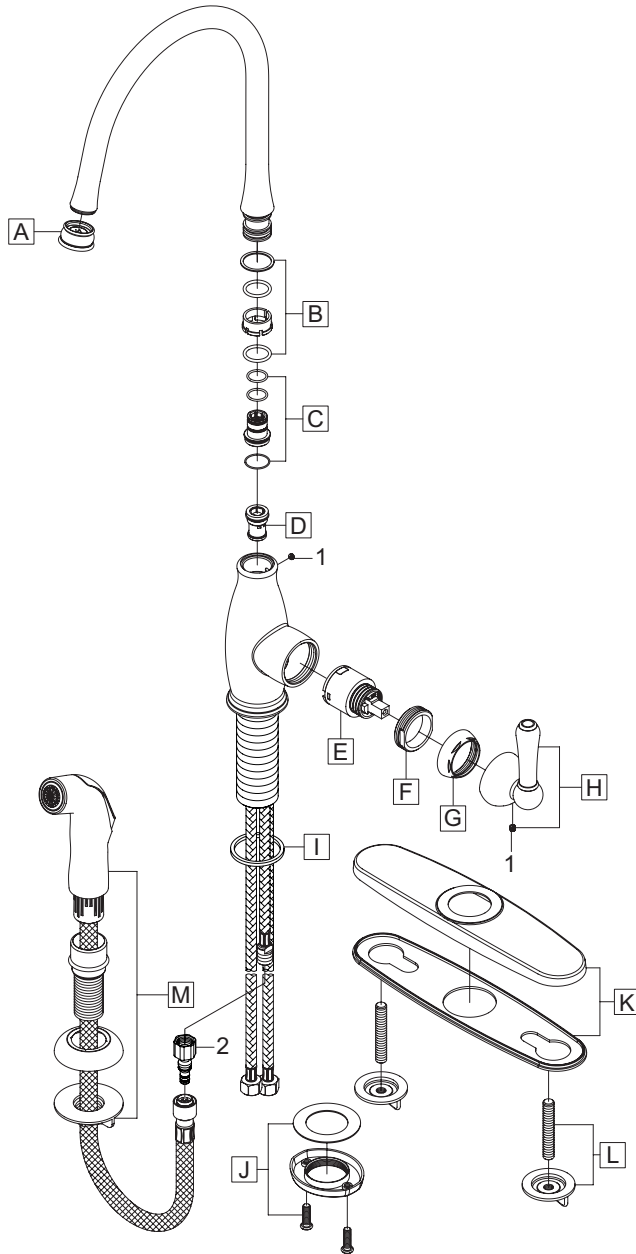
(6) Connect hot and cold inlet supply hoses to supply stops. For supply stop with 1/2" outlet connection, use 3/8" male to 1/2" female adapter for installation. Adapters are optional and are not provided with the faucet. Turn on both side supply stops to check any leaks.



(7) Important: After installation is complete, remove the aerator. Turn on the water and allow both hot and cold water to run for at least one minute each. While water is running, check for leaks. Turn off the water and replace the aerator when finished.

Exploded Drawing:

* Note: Please specify finish/color when ordering.



	ITEM #	DESCRIPTION
A	OP-420048*	1.5 GPM Aerator
B	OP-420041	Spout Swivel Repair Kit
C	OP-420049	Spout Repair Kit
D	OP-420024	Diverter Piston
E	OP-320002	Ceramic Disc Cartridge
F	OP-420042	Retainer Nut
G	OP-420043*	Retainer Cap
H	OP-120002*	Lever Handle
I	OP-420044	Gasket
J	OP-520015	Locknut with Screws
K	OP-420045*	Deck Plate
L	OP-520003	Mounting Bolts & Nuts
M	OP-420077*	Side Spray Assembly
1	OP-420047	Allen Screw
2	OP-420083	Quick Connect Adapter



For more care information or trouble shooting inquiries about your Olympia product, Please call:
OLYMPIA FAUCETS, INC. (888) 772-7701
 Monday-Friday 8 AM to 8 PM EST (5 AM to 5 PM PST)
www.olympiafaucets.com