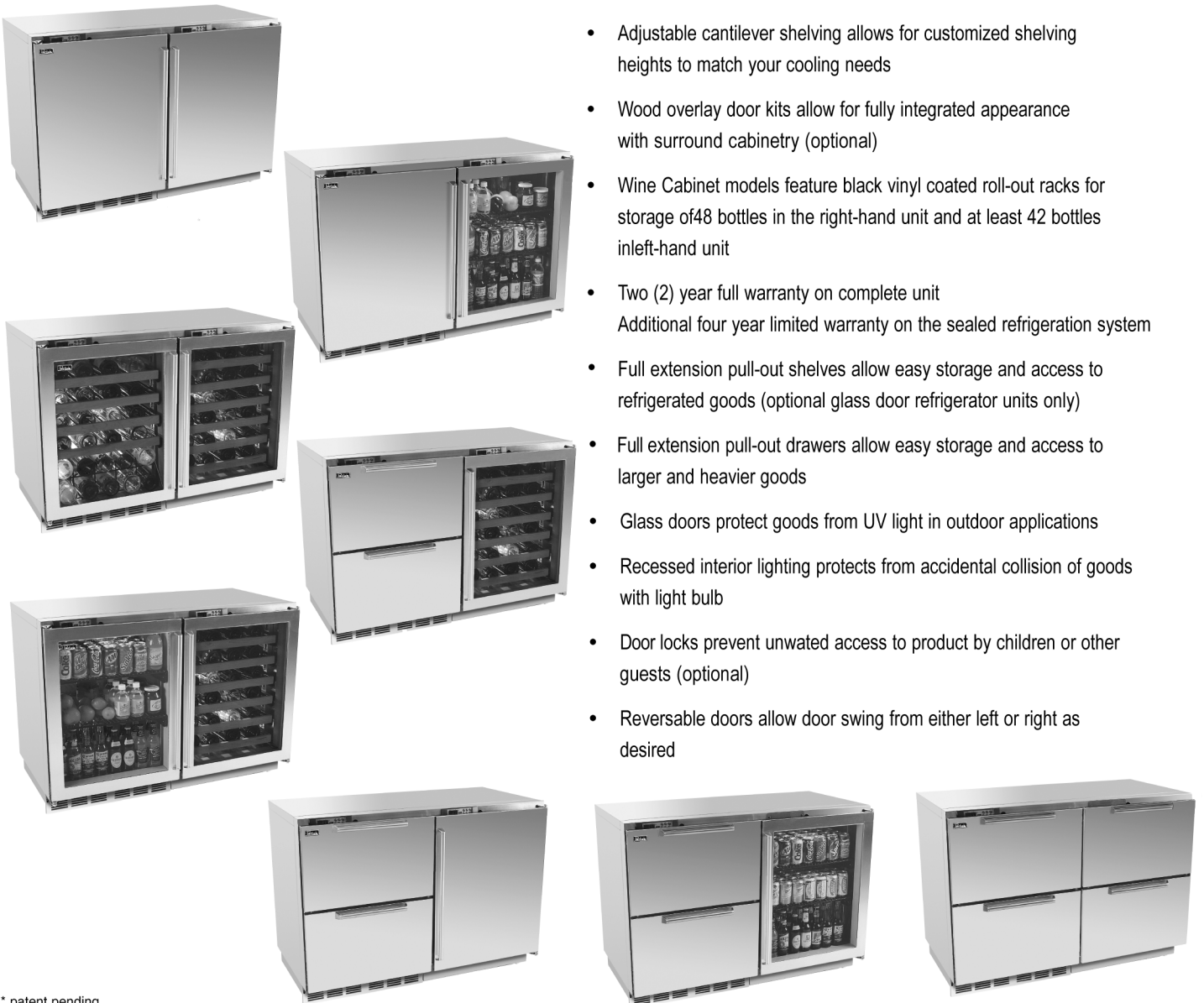


Perlick Features



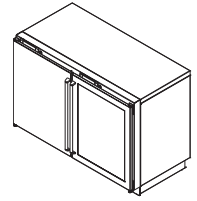
48" TWO-DOOR CABINET*



- Provides increased capacity within one unit
- Provides reduced operation noise and better energy efficiency than having multiple single (24") cabinets
- Multi-zone cabinets provide separate temperature zones for freezer, refrigerator, and wine cabinet applications
- Can be used as a stand-alone cabinet with stainless steel top and sides or built into cabinetry with galvanized top and sides
- All polished stainless steel interior
- Variable Capacity Compressor for quiet operation, greater energy efficiency, more stable temperatures, and greater temperature pull down capability
- Front vented, forced air refrigeration system
- Freezer equipped with automatic hot gas defrost for maintenance-free defrosting
- Electronic digital control and temperature readout
- Adjustable cantilever shelving allows for customized shelving heights to match your cooling needs
- Wood overlay door kits allow for fully integrated appearance with surround cabinetry (optional)
- Wine Cabinet models feature black vinyl coated roll-out racks for storage of 48 bottles in the right-hand unit and at least 42 bottles in left-hand unit
- Two (2) year full warranty on complete unit
Additional four year limited warranty on the sealed refrigeration system
- Full extension pull-out shelves allow easy storage and access to refrigerated goods (optional glass door refrigerator units only)
- Full extension pull-out drawers allow easy storage and access to larger and heavier goods
- Glass doors protect goods from UV light in outdoor applications
- Recessed interior lighting protects from accidental collision of goods with light bulb
- Door locks prevent unwated access to product by children or other guests (optional)
- Reversable doors allow door swing from either left or right as desired

* patent pending

SIZES & SPECIFICATIONS



H2FR-B	48" Freezer/Refrigerator Built In
H2FR-S	48" Freezer/Refrigerator All Stainless
H2RO-B	48" Refrigerator = Refrigerator Built In
H2RO-S	48" Refrigerator = Refrigerator All Stainless
H2RO-O	48" Refrigerator = Refrigerator Outdoor
H2RW-B	48" Refrigerator/ Wine Built In
H2RW-S	48" Refrigerator/Wine All Stainless
H2WO-B	48" Wine = Wine Built In
H2WO-S	48" Wine = Wine All Stainless
H2WW-B	48" Wine/Wine Built In
H2WW-S	48" Wine/Wine All Stainless
H2WO-O	48" Wine/Wine Outdoor

Door/Drawer Options

- Solid stainless steel
- Wood overlay kit
- Glass with stainless steel trim (not freezer, not drawer)
- Glass with wood trim kit (not freezer, not drawer)

- Electrical** 115V, 60Hz., 1 phase AC, 3.5 amps.
- Plumbing** None required - condensate evaporates automatically
- Door Hinging** Field reversible doors
- Shipping Weight** 250 lbs.
- Refrigerated Vol.** up to 12.0 cubic ft

