



Figure # 5071PP

Polypropylene Ball Valve

Product Features

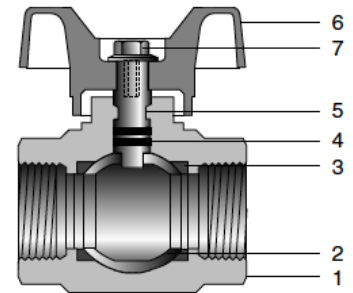
- 200# WOG
- Full Port
- One Piece Body
- PTFE Seats
- Blow-Out Proof Stem
- Wing or Lever Handle
- Screwed Ends



Materials & Specifications

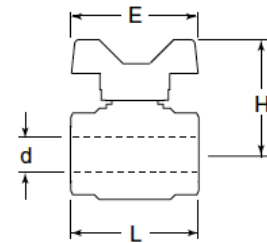
| Item | Description | Material | Specification |
|------|----------------------------|---------------------------|---------------|
| 1 | Body | Polypropylene* | |
| 2 | Ball | Chrom plated forged brass | A283 C37700 |
| 3 | Seat | PTFE | |
| 4 | O-ring | NBR | |
| 5 | Stem | Brass rod | A283 C37700 |
| 6 | Wing handle (1/2" - 1) | PA6-30G | |
| | Lever handle (1-1/4" - 2") | Aluminum | |
| 7 | Bolt | Dacromet plated steel | A36 |

* With ultra-violet prohibitor and 30% of glassfiber



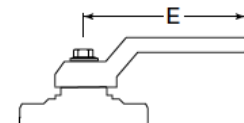
Dimensions, Weights (inches-lbs.) & Valve Data

| Size | 1/2 | 3/4 | 1 | 1-1/4 | 1-1/2 | 2 |
|------|------|------|------|-------|-------|------|
| L | 2.41 | 2.84 | 3.28 | 3.86 | 4.21 | 5.16 |
| H | 2.10 | 2.25 | 2.81 | 2.99 | 3.86 | 4.21 |
| E | 3.11 | 3.11 | 3.19 | 4.72 | 5.91 | 5.91 |
| d | 0.59 | 0.77 | 1.01 | 1.26 | 1.58 | 2.01 |
| Wt | 0.26 | 0.40 | 0.66 | 1.08 | 1.65 | 2.93 |



Cv Value (USgal/min)

| Size | 1/2 | 3/4 | 1 | 1-1/4 | 1-1/2 | 2 |
|------|-----|-----|----|-------|-------|-----|
| | 15 | 30 | 60 | 110 | 130 | 360 |



Handle construction for sizes 1-1/4" to 2"

RED-WHITE VALVE CORP.

20600 Regency Lane, Lake Forest, CA 92630

TEL: 949.859.1010 • FAX: 949.859.7200 • www.redwhitevalvecorp.com