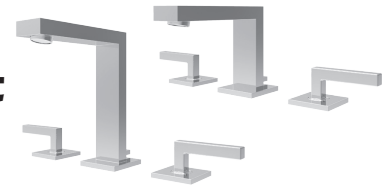


SYMMONS® Duro®

Two Handle Widespread Lavatory Faucet

SLW-3612-1.5, SLW-3622-1.5

Installation Brief



Model Numbers

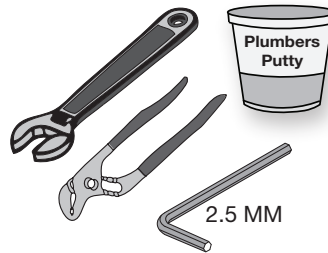
- SLW-3612-1.5 Lavatory faucet with pop-up drain (6-5/8" height)
- SLW-3622-1.5 Lavatory faucet with pop-up drain (4" height)

Modification Options

Append -suffix code to part numbers when applicable

- 0.5 0.5 gpm (1.9 L/min) aerator
- 1.0 1.0 gpm (3.8 L/min) aerator
- 2.2 2.2 gpm (8.3 L/min) aerator
- H2 Wide, square lever handles
- H3 Stacked, square lever handles

Tools & Materials



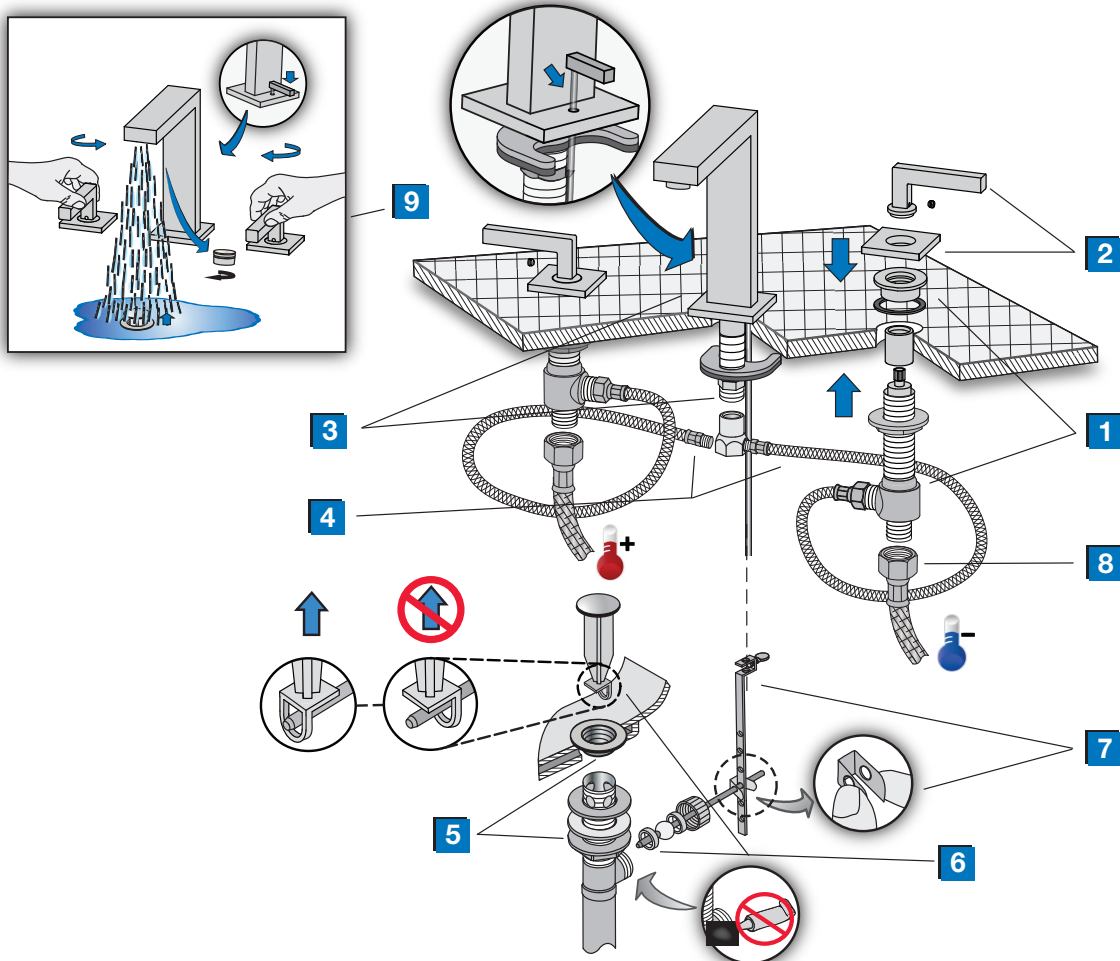
☎ Need Help?

Contact Symmons customer service at (800) 796-6667, (781) 848-2250
 Email: customerservice@symmons.com
 Monday - Friday 7:30 am - 7:00 pm EST

💻 Please check Symmons website for technical help, the latest product information and warranty policy.
www.symmons.com/service

Quick Install Guide

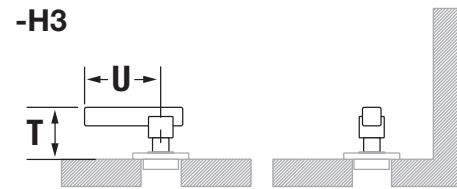
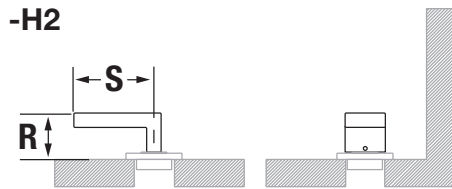
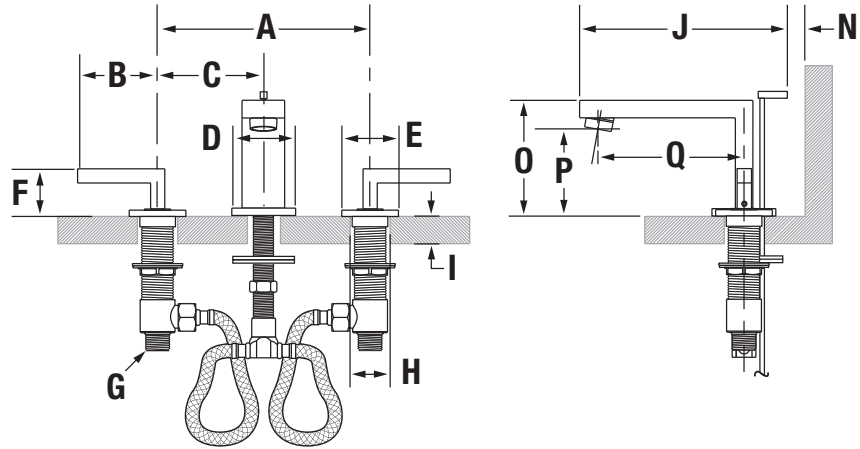
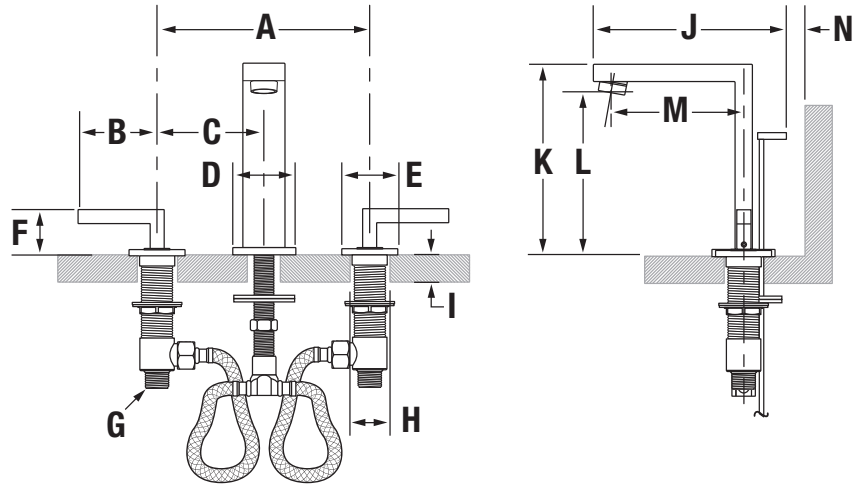
Duro Two Handle Widespread Lavatory Faucet, SLW-3612-1.5, SLW-3622-1.5



Dimensions

Duro Two Handle Widespread Lavatory Faucet, SLW-3612-1.5, SLW-3622-1.5

Measurements	
A	Min. 8", 203 mm Max. 16", 406 mm
B	2 3/4", 70 mm
C	4", 102 mm min.
D	2 1/8", 54 mm
E	2", 51 mm
F	1 5/8", 40 mm
G	1/2-14 NPSM
H	(3x) Hole size Min. Ø 1 1/4", 32 mm Max. Ø 1 3/8", 35 mm
I	Deck Thickness Ref. Min. 7/8", 22 mm Max. 2 3/8", 60 mm
J	6 3/8", 161 mm
K	6 5/8", 170 mm
L	5 5/8", 143 mm
M	4 1/4", 108 mm
N	1 1/2", 38 mm
O	4", 102 mm
P	3", 76 mm
Q	5", 127 mm
R	1 5/8", 41 mm
S	2 3/4", 70 mm
T	1 3/4", 44 mm
U	2 5/8", 67 mm

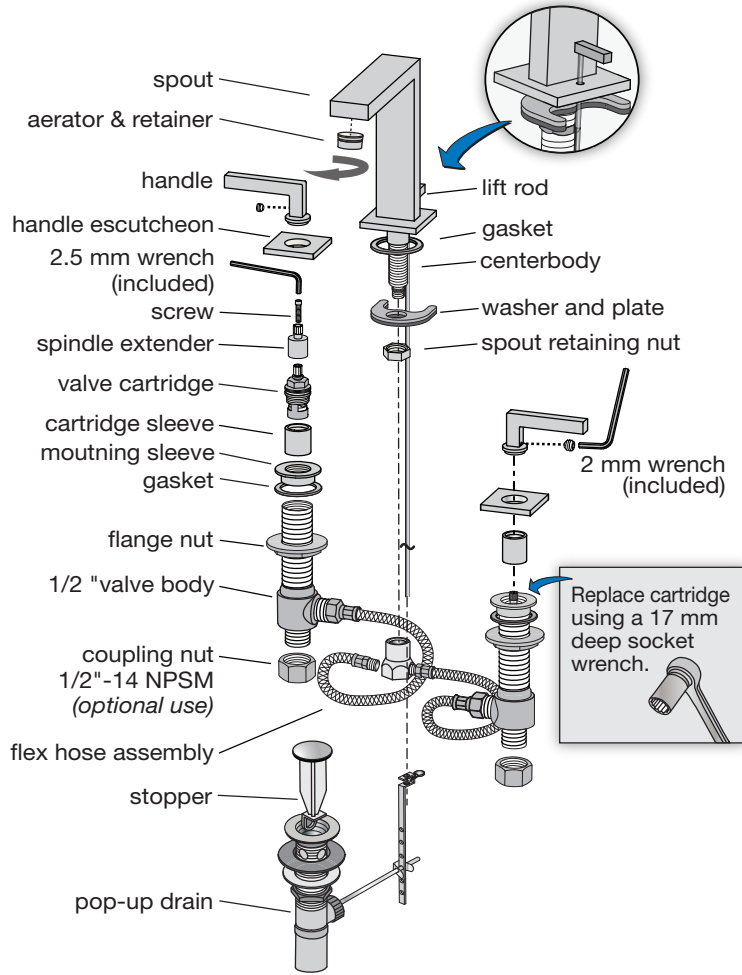


Note: Dimensions subject to change without notice.

Parts Assembly

Duro Two Handle Widespread Lavatory Faucet, SLW-3612-1.5, SLW-3622-1.5

For faucets purchased after Nov. 2013



Replacement Parts

Part Number	Item
RL-149	Handle assembly handle (2) screw (2) escutcheon (2)
RL-232 (-H2)	Lever handle assembly handle (2) screw (2) escutcheon (2)
RL-231 (-H3)	Blade handle assembly handle (2) screw (2) escutcheon (2)
LN-15* FLR-110-1.5* FLR-110-1.0*	Aerator & retainer flow rates 2.2 gpm (8.3L /min) 1.5 gpm (5.7L /min) 1.0 gpm (3.8L /min) washer aerator retainer
KN-114 (hot) OFF = CW KN-113 (cold) OFF = CCW	Valve cartridge
RL-148	Mounting hardware kit retainer (2) gasket (2) flex hose (2)
RL-150*	Lift rod
RL-154*	Pop-up drain

Ordering replacement parts:

Call Symmons customer service at (800) 796-6667, M-F 7:30 am - 7:00 pm EST or check our website at www.symmons.com for a list of Symmons distributors.

* Note: When ordering replacement parts for faucets with an optional decorative finish, append appropriate three letter finish suffix code to part numbers marked with an asterisk (*).

For California Residents

WARNING: This product contains chemicals known to the State of California to cause cancer, birth defects, or other reproductive harm.