

# Watts WaterPEX® Installation Guidelines

## Making WaterPEX® Connections with CinchClamps™ & Close Ear CinchClamp

### Product Overview

The CinchClamp™ should be installed in accordance to local plumbing code and practices. In addition to these standards, the following should be considered:

#### Tools:

Use an approved tool such as Watts CinchTool™ or equivalent (must be ratcheting-type tool meeting ASTM 2098 specifications). Failure to use this type of tool will result in an improper fit. Use of other tools, such as pliers, will result in an improper fit and possible leaks.

#### Warning!

- If connections must be made in temperatures below 30°F, caution must be taken to allow the WaterPEX to form a proper seal against the barb. Apply the connection slowly to ensure the PEX material conforms to the barb.
- When the CinchTool's jaws are closed, the gap between the jaws must be less than 1/16". Any gap greater than 1/16" is a sign of tool wear. Discard the tool and replace it immediately. Use of an out-of-spec tool will cause leaks.
- Never use a CinchTool™ to remove a CinchClamp™. Damage to the tool's calibration may result. Use a pair of pliers or vice grips.



### The Connection

Make sure the WaterPEX® has a clean, square end. Use a WaterPEX® Tube Cutter to ensure the WaterPEX® does not deform while cutting.

#### For CE™ CinchClamps:

WaterPEX connections made with Close Ear (CE) CinchClamps are a snap. Place the Close Ear CinchClamp over the end of the pipe. It stays where you put it! Follow steps 1 through 4 and allow the same 1/8" gap between the shoulder of the fitting and the CinchClamp.

#### Step 1:

Slide the CinchClamp™ over the end of the WaterPEX®. Allow enough room for the fitting to be inserted.

#### Step 2:

Insert the fitting into the tube end making sure the tube is fully sealed over the fitting. Allow for 1/8" of clearance between the CinchClamp™ and the fitting.

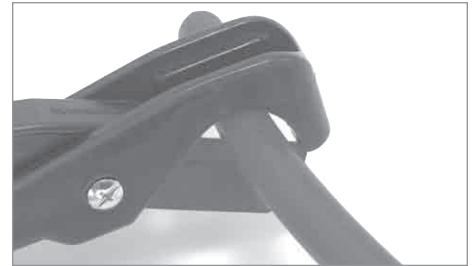
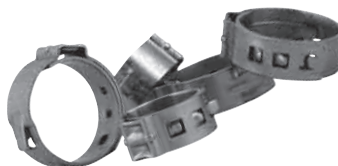
**Warning: Never use CinchClamps™ on PEX fittings made from copper. Leaks may result. Use only ASTM brass or poly-sulfone crimp insert fittings.**

#### Step 3:

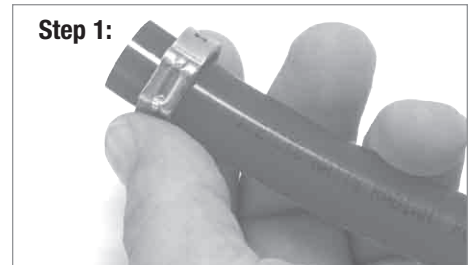
Position the open jaws of the CinchTool™ over the tab of the CinchClamp™ and compress the handles of the CinchTool together. The ratcheting mechanism of the CinchTool™ will not allow for an improper connection. The CinchTool™ will automatically release when the connection is complete.

#### Step 4:

Verify the connection is secure by visually checking the CinchTab™. The tab should be shaped as shown in Step 4.



#### Step 1:



#### Step 2:



#### Step 3:



#### Step 4:



**LIMITED WARRANTY:** A. Watts Regulator Co. (iWatts) warrants its WaterPEX® cross-linked polyethylene tubing, barbed PEX fittings, brass and plastic Quick-Connect fittings and manifolds, factory manufactured copper manifolds and Quick-Connect accessories to be free of defects in material and workmanship when used under normal usage in potable water systems, and installed in accordance with all Watts printed installation instructions. Specific warranty durations apply as follows:

1. Watts WaterPEX® cross-linked polyethylene (non-barrier PEX) pipe, brass and plastic barbed PEX fittings, and factory manufactured copper manifolds when installed as a system using Watts WaterPEX pipe, Watts brass or plastic barbed PEX fittings, and Watts factory manufactured copper manifolds for a period of twenty-five (25) years from the date of original shipment.
2. Watts WaterPEX® cross-linked polyethylene (non-barrier PEX) pipe, when installed with brass or plastic barbed PEX fittings manufactured by others that meet the applicable ASTM Standards (brass - ASTM F 1807) (plastic - ASTM F 2159) for a period of ten (10) years from the date of original shipment.
3. Watts WaterPEX® brass or plastic barbed PEX fittings and factory manufactured copper manifolds when installed with cross-linked polyethylene (non-barrier PEX) pipe manufactured by others that meet the ASTM F 876 requirements for a period of ten (10) years from the date of original shipment.
4. Series 10, 35, and 45 Quick-Connect fittings and manifolds for a period of twenty-five (25) years from the date of original shipment.
5. All other valves and accessories sold under the Watts WaterPEX or Watts Quick-Connect brand name for a period of two (2) years from the date of original shipment.

Watts's obligation will be to repair or replace, at its discretion, any of these products proven to be defective in material or workmanship when these products are covered under this limited warranty.

B. In the event of a system malfunction or leak caused by defective Watts warranted materials (and not by incorrect installation, incorrect handling procedures or by jobsite or installation damage), a reasonable pre-approved amount will be allowed for repair materials and repair labor. In the event of a leak occurring in a factory manifold, you may contact Watts for either a free replacement manifold or any parts reasonably needed to repair such a leak (freight prepaid). Note that Watts limits its warranty to its tubing, valves and accessories, fittings and manifolds. Watts does not warrant the connection on any installation, as the integrity of the connection is subject to the workmanship of the contractor/installer. The connection is the sole responsibility of the person who installs it.

C. In order to qualify for a warranty remedy under paragraph B, you must contact Watts in advance and receive a written authorization for this remedy from an authorized Watts representative. Repair materials, repair labor and freight expenses not authorized in writing in advance by Watts in this way will not be compensated.

D. To qualify for the warranty described above, you must do the following:

1. Use good construction techniques to install our materials, as specified in our current design and installation guidelines and technical notes. This must include field pressure testing our warranted materials before they are covered by concrete or otherwise made inaccessible.
2. Install Watts WaterPEX® and Watts Quick-Connect materials according to all guidelines and manuals published by Watts.
3. Install Watts WaterPEX® and Watts Quick-Connect products in a system that will not operate at temperatures or at pressures that exceed the rating printed on the tubing.
4. The Watts warranted product must be installed in compliance with local building and plumbing codes.

E. Evidence of tampering, mishandling, neglect, accidental damage, freeze damage or unauthorized repairs that cause damage to Watts's warranted products will void any warranty coverage for those particular products. All field connections are specifically excluded from the terms of this warranty.

F. Watts provides a complete plumbing system offering so that it is possible to complete an installation with Watts products. However, it is possible that other manufacturers' tubing and/or fittings may be installed in any given installation. Providing that the tubing and/or fittings are manufactured to their applicable ASTM standards, and have been certified by a recognized third-party testing agency, the Watts product in the given installation will continue to be covered under this warranty. In the event of a system malfunction or leak that has other tubing and/or fitting manufacturers' components installed within the failed system, Watts will be responsible only for proven defects in material or workmanship in the Watts products. Products manufactured by another company should be reported to that manufacturer for its warranty response.

G. Disclaimer of Warranty. **THE WARRANTY SET FORTH HEREIN IS GIVEN EXPRESSLY AND IS THE ONLY WARRANTY GIVEN BY WATTS WITH RESPECT TO THE PRODUCTS LISTED IN PARAGRAPH A. WATTS MAKES NO OTHER WARRANTIES, EXPRESS OR IMPLIED. WATTS HEREBY SPECIFICALLY DISCLAIMS ALL OTHER WARRANTIES, EXPRESS OR IMPLIED, INCLUDING BUT NOT LIMITED TO THE IMPLIED WARRANTIES OF MERCHANTABILITY AND FITNESS FOR A PARTICULAR PURPOSE.**

H. Limitation of Liability. The remedy described above shall constitute the sole and exclusive remedy for breach of warranty, and, apart from that remedy, Watts shall not be responsible for any incidental, special or consequential damages, including without limitation, lost profits or the cost of repairing or replacing other property which is damaged if these warranted products do not work properly, other costs resulting from labor charges, delays, vandalism, negligence, fouling caused by foreign material, damage from adverse water conditions, adverse chemical environments, or any other circumstances over which Watts has no control. This warranty shall be invalidated by any abuse, misuse, misapplication or improper installation of the product. Some states do not allow limitations on how long an implied warranty lasts, and some states do not allow the exclusion or limitation of incidental or consequential damages. Therefore the above limitations may not apply to you. This Limited Warranty gives you specific legal rights, and you may have other rights that vary from state to state. You should consult applicable state laws to determine your rights. **SO FAR AS IS CONSISTENT WITH APPLICABLE STATE LAW, ANY IMPLIED WARRANTIES THAT MAY NOT BE DISCLAIMED, INCLUDING THE IMPLIED WARRANTIES OF MERCHANTABILITY AND FITNESS FOR A PARTICULAR PURPOSE, ARE LIMITED IN DURATION TO ONE YEAR FROM THE DATE OF ORIGINAL SHIPMENT.**

I. RETURNED GOODS – CREDIT: No material shall be returned without authorization. When credit is issued, it will be at the price originally invoiced, less handling charges, based on the costs of reconditioning, boxing, etc. Products which are obsolete or made to special order are not returnable.

**CALIFORNIA PROPOSITION 65 WARNING**  
**WARNING:** This product contains chemicals known to the State of California to cause cancer and birth defects or other reproductive harm. (California law requires this warning to be given to customers in the State of California.)  
**For more information: [www.watts.com/prop65](http://www.watts.com/prop65)**



A Watts Water Technologies Company



USA: Tel: (978) 688-1811 • Fax: (978) 794-1848 • [www.watts.com](http://www.watts.com)  
Canada: Tel: (905) 332-4090 • Fax: (905) 332-7068 • [www.watts.ca](http://www.watts.ca)