

## For Retrofit Applications

Job Name \_\_\_\_\_

Contractor \_\_\_\_\_

Job Location \_\_\_\_\_

Approval \_\_\_\_\_

Engineer \_\_\_\_\_

Contractor's P.O. No. \_\_\_\_\_

Approval \_\_\_\_\_

Representative \_\_\_\_\_

# LEAD FREE\*

## Series W-SPL and W-FLG Make Up Spools and Flanges

For Backflow Preventers 2½"-10" (65-250mm)

Watts "Make Up" Spools are used when retrofitting a backflow preventer into an installation where an existing backflow preventer is being replaced. Watts "Make Up" Flanges are used in piping applications where there is a need for additional fitting lay length. The W-SPL and W-FLG feature Lead Free\* construction to comply with Lead Free\* installation requirements.

### Models

#### W-SPL - Make Up Spools

Available in Lightweight 300 series Stainless Steel or Epoxy coated Carbon Steel. AWWA 150# class "D" Carbon Steel Flanges offered as standard. 150# class "D" Stainless Steel Flanges upon special request.

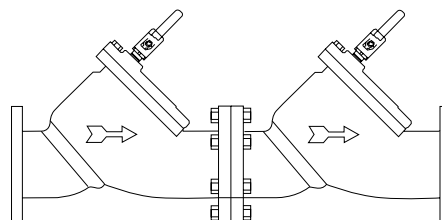
#### W-FLG - Make Up Flanges

AWWA 150# modified class "D" Zinc plated Carbon Steel Flanges with standard bolt pattern. 150# modified class "D" Zinc Plated Carbon Steel Flanges with standard pattern slotted. 150# modified class "D" Stainless Steel Flanges with standard bolt pattern.

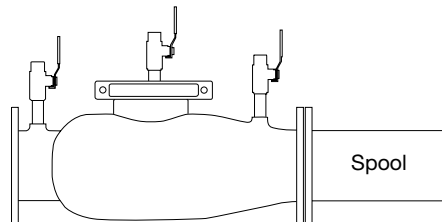
Contact factory for specific applications.



Spools



Watts 709/LF709



Watts 774 with Spool

### NOTICE

The information contained herein is not intended to replace the full product installation and safety information available or the experience of a trained product installer. You are required to thoroughly read all installation instructions and product safety information before beginning the installation of this product.

### NOTICE

Inquire with governing authorities for local installation requirements

\*The wetted surface of this product contacted by consumable water contains less than 0.25% of lead by weight.

Watts product specifications in U.S. customary units and metric are approximate and are provided for reference only. For precise measurements, please contact Watts Technical Service. Watts reserves the right to change or modify product design, construction, specifications, or materials without prior notice and without incurring any obligation to make such changes and modifications on Watts products previously or subsequently sold.

## How to order

Locate the manufacturer and model number under the valve size column in the matrix on these two pages. It is assumed that the valve you will be installing is a Watts 774 Sentry Series. On the first line across from the model number is the lay length of the valve less gates. On the lines listed below is the valve being replaced. On that line is the lay length of that valve. The column to the right is the length of the spool needed to "make up" the difference between the valve being replaced and the lay length of the "Sentry Series." Below the spool length is the ordering code for that spool.

### Retrofit Spool Pieces for Various Lengths • Cast Iron Watts Products vs Watts Sentry Series

WATTS MODEL	ACTUAL SPOOL		ACTUAL SPOOL		ACTUAL SPOOL		ACTUAL SPOOL		ACTUAL SPOOL		ACTUAL SPOOL	
	2½" <sup>†</sup>	LENGTH NEEDED	3" <sup>†</sup>	LENGTH NEEDED	4" <sup>†</sup>	LENGTH NEEDED	6" <sup>†</sup>	LENGTH NEEDED	8" <sup>†</sup>	LENGTH NEEDED	10" <sup>†</sup>	LENGTH NEEDED
774	22"	-	22"	-	22"	-	27½"	-	29½"	-	29½"	-
709/LF709	24"	1⅞"	24"	1⅞"	34"	11⅞"	42½"	14⅞"	52"	22⅜"	64"	34⅞"
774DCDA	22"	-	22"	-	22"	-	27½"	-	29½"	-	29½"	-
709DCDA	-	-	24"	1⅞"	34"	11⅞"	41½"	13⅞"	52"	22⅜"	64"	34⅞"
994	22"	-	22"	-	22"	-	27½"	-	29½"	-	29½"	-
909/LF909	26⅞"	4"	26⅞"	4"	37"	14⅞"	44½"	16⅞"	55¼"	25⅝"	67⅜"	37¼"
994RPDA	22"	-	22"	-	22"	-	27½"	-	-	-	-	-
909RPDA	26⅞"	4"	26⅞"	4"	37"	14⅞"	44½"	16⅞"	55¼"	-	67⅜"	-

<sup>†</sup>Size and length of valve being replaced.

**For Example:** when replacing a Watts 4" 709 with a Watts 4" 774 you would need a spool that is 11⅞" long. The slight decrease in the spools length is to accommodate the flange gasket, approximately ⅛".

#### Example:

WATTS MODEL: 709		WATTS MODEL: 774	
Line Size	Lay Length	Line Size	Lay Length
4"	34"	4"	22"

Spool Length from chart: 11⅞"    Subtract Lengths: 12"    Ordering code: 0107020

**Spool Sizes and Lengths**

VALVE SIZE	ORDERING CODE	LENGTH	SPOOL SIZE	MODEL
2½"	0107000	1⅞"	2½" x 1⅞"	W-SPL
	0107001	3⅞"	2½" x 3⅞"	W-SPL
	0107002	2½⅞"	2½" x 3½⅞"	W-SPL
	0107003	4"	2½" x 4"	W-SPL
3"	0107004	4½⅞"	2½" x 4½⅞"	W-SPL
	0107005	1⅞"	3" x 1⅞"	W-SPL
	0107006	2½"	3" x 2½"	W-SPL
	0107007	3½"	3" x 3½"	W-SPL
	0107008	3½⅞"	3" x 3½⅞"	W-SPL
4"	0107009	4"	3" x 4"	W-SPL
	0107010	5⅞"	4" x 5⅞"	W-SPL
	0107011	5⅞"	4" x 5⅞"	W-SPL
	0107012	6⅞"	4" x 6⅞"	W-SPL
	0107013	6⅜⅞"	4" x 6⅜⅞"	W-SPL
	0107014	7⅞"	4" x 7⅞"	W-SPL
	0107015	7½⅞"	4" x 7½⅞"	W-SPL
	0107016	8"	4" x 8"	W-SPL
	0107017	9⅞"	4" x 9⅞"	W-SPL
	0107018	10¼"	4" x 10¼"	W-SPL
	0107019	10⅞"	4" x 10⅞"	W-SPL
	0107020	11⅞"	4" x 11⅞"	W-SPL
	0107021	12"	4" x 12"	W-SPL
	0107022	14⅞"	4" x 14⅞"	W-SPL
6"	0107023	5⅞"	6" x 5⅞"	W-SPL
	0107024	8⅞"	6" x 8⅞"	W-SPL
	0107025	9½⅞"	6" x 9½⅞"	W-SPL
	0107026	10¼"	6" x 10¼"	W-SPL
	0107027	11"	6" x 11"	W-SPL
	0107028	12⅞"	6" x 12⅞"	W-SPL
	0107029	12½"	6" x 12½"	W-SPL
	0107030	13⅞"	6" x 13⅞"	W-SPL
	0107031	13⅞"	6" x 13⅞"	W-SPL
	0107032	14"	6" x 14"	W-SPL
	0107033	14⅞"	6" x 14⅞"	W-SPL
	0107034	14⅞"	6" x 14⅞"	W-SPL
	0107035	16⅞"	6" x 16⅞"	W-SPL
	0107036	17⅞"	6" x 17⅞"	W-SPL

VALVE SIZE	ORDERING CODE	LENGTH	SPOOL SIZE	MODEL	
8"	0107037	12⅞"	8" x 12⅞"	W-SPL	
	0107038	16⅞"	8" x 16⅞"	W-SPL	
	0107039	16½"	8" x 16½"	W-SPL	
	0107040	17⅞"	8" x 17⅞"	W-SPL	
	0107041	18⅞"	8" x 18⅞"	W-SPL	
	0107042	21⅞"	8" x 21⅞"	W-SPL	
	0107043	21⅞"	8" x 21⅞"	W-SPL	
	0107044	22⅞"	8" x 22⅞"	W-SPL	
	0107045	22⅞"	8" x 22⅞"	W-SPL	
	0107046	23⅞"	8" x 23⅞"	W-SPL	
	0107047	25⅞"	8" x 25⅞"	W-SPL	
	10"	0107048	16⅞"	10" x 16⅞"	W-SPL
		0107049	16¾"	10" x 16¾"	W-SPL
		0107050	28⅞"	10" x 28⅞"	W-SPL
0107051		28⅞"	10" x 28⅞"	W-SPL	
0107052		28½"	10" x 28½"	W-SPL	
0107053		29⅞"	10" x 29⅞"	W-SPL	
0107054		29½⅞"	10" x 29½⅞"	W-SPL	
0107055		32⅞"	10" x 32⅞"	W-SPL	
0107056		32⅞"	10" x 32⅞"	W-SPL	
0107057		34⅞"	10" x 34⅞"	W-SPL	
0107058	37¾"	10" x 37¾"	W-SPL		

Size = Valve Size x Spool Length

**Use with series 757 and 957 when replacing:**

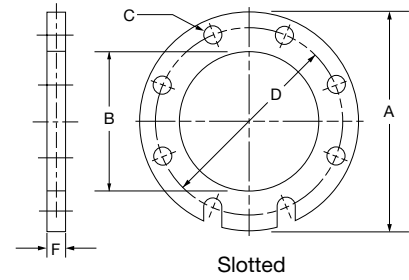
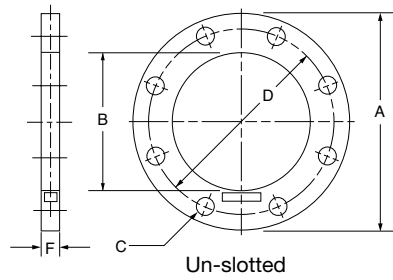
VALVE SIZE	ORDERING CODE	LENGTH	SPOOL SIZE	MODEL	VALVE SIZE	ORDERING CODE	LENGTH	SPOOL SIZE	MODEL
<b>HERSEY 6CM</b>					<b>IRON</b>				
<b>BRONZE</b>									
2½"	0107105	3¾"	2½" x 3¾"	W-SPL	2½"	0107106	5¼"	2½" x 5¼"	W-SPL
3"	0107107	8⅞"	3" x 8⅞"	W-SPL	3"	0107107	8⅞"	3" x 8⅞"	W-SPL
4"	0107109	12⅞"	4" x 12⅞"	W-SPL	4"	0107110	13⅞"	4" x 13⅞"	W-SPL
6"	0107111	10¼"	6" x 18¼"	W-SPL	6"	0107111	18¼"	6" x 18¼"	W-SPL
-	-	-	-	-	8"	0107112	25¼"	8" x 25¼"	W-SPL
-	-	-	-	-	10"	0107113	30¼"	10" x 30¼"	W-SPL
<b>Hersey Model 2</b>									
3"	0107108	8½⅞"	3" x 8½⅞"	W-SPL					
4"	0107110	13⅞"	4" x 13⅞"	W-SPL					
6"	0107111	18¼"	6" x 18¼"	W-SPL					
8"	0107112	25¼"	8" x 25¼"	W-SPL					
10"	0107113	30¼"	10" x 30¼"	W-SPL					

Please be advised that due to variations in manufacturing tolerances, the measurements listed can vary from what is installed. Please verify the measurements of the valve being replaced. Custom lay lengths available upon request.

# "Make Up" Flanges

Available Thickness

- 1/4" & 1/2"      Stainless Steel
- 1/2" & 1"        Zinc Plated Carbon Steel



## AWWA C207 Modified Class D Spacer Flanges

SIZE	STD.	MODEL	ORDERING CODE	A FLG. OD +/-1/8	B FLG. ID +1/16 -0	C BOLT HOLE SIZE	D BOLT CIRCLE +/-1/16	E NO. HOLES	F THICKNESS +/-1/8	COMMENTS
2"	AWWA D	W-FLG SS-U	0107060	6"	2.44"	3/4"	4 3/4"	4	1/4"	UN-SLOTTED
2"	AWWA D	W-FLG SS-U	0107061	6"	2.44"	3/4"	4 3/4"	4	1/2"	UN-SLOTTED
2"	AWWA D	W-FLG SS-S	0107062	6"	2.44"	3/4"	4 3/4"	4	1/4"	SLOTTED
2"	AWWA D	W-FLG SS-S	0107063	6"	2.44"	3/4"	4 3/4"	4	1/2"	SLOTTED
2 1/2"	AWWA D	W-FLG SS-U	0107064	7"	2.94"	3/4"	5 1/2"	4	1/4"	UN-SLOTTED
2 1/2"	AWWA D	W-FLG SS-U	0107065	7"	2.94"	3/4"	5 1/2"	4	1/2"	UN-SLOTTED
2 1/2"	AWWA D	W-FLG SS-S	0107066	7"	2.94"	3/4"	5 1/2"	4	1/4"	SLOTTED
2 1/2"	AWWA D	W-FLG SS-S	0107067	7"	2.94"	3/4"	5 1/2"	4	1/2"	SLOTTED
3"	AWWA D	W-FLG Z-U	0107068	7 1/2"	3.57"	3/4"	6"	4	1/2"	UN-SLOTTED
3"	AWWA D	W-FLG Z-U	0107069	7 1/2"	3.57"	3/4"	6"	4	1"	UN-SLOTTED
3"	AWWA D	W-FLG Z-S	0107070	7 1/2"	3.57"	3/4"	6"	4	1/2"	SLOTTED
3"	AWWA D	W-FLG Z-S	0107071	7 1/2"	3.57"	3/4"	6"	4	1"	SLOTTED
3"	AWWA D	W-FLG SS-U	0107072	7 1/2"	3.57"	3/4"	6"	4	1/4"	UN-SLOTTED
3"	AWWA D	W-FLG SS-U	0107073	7 1/2"	3.57"	3/4"	6"	4	1/2"	UN-SLOTTED
3"	AWWA D	W-FLG SS-S	0107074	7 1/2"	3.57"	3/4"	6"	4	1/4"	SLOTTED
3"	AWWA D	W-FLG SS-S	0107075	7 1/2"	3.57"	3/4"	6"	4	1/2"	SLOTTED
4"	AWWA D	W-FLG Z-U	0107076	9"	4.57"	3/4"	7 1/2"	8	1/2"	UN-SLOTTED
4"	AWWA D	W-FLG Z-U	0107077	9"	4.57"	3/4"	7 1/2"	8	1"	UN-SLOTTED
4"	AWWA D	W-FLG Z-S	0107078	9"	4.57"	3/4"	7 1/2"	8	1/2"	SLOTTED
4"	AWWA D	W-FLG Z-S	0107079	9"	4.57"	3/4"	7 1/2"	8	1"	SLOTTED
4"	AWWA D	W-FLG SS-U	0107080	9"	4.57"	3/4"	7 1/2"	8	1/4"	UN-SLOTTED
4"	AWWA D	W-FLG SS-U	0107081	9"	4.57"	3/4"	7 1/2"	8	1/2"	UN-SLOTTED
4"	AWWA D	W-FLG SS-S	0107082	9"	4.57"	3/4"	7 1/2"	8	1/4"	SLOTTED
4"	AWWA D	W-FLG SS-S	0107083	9"	4.57"	3/4"	7 1/2"	8	1/2"	SLOTTED
6"	AWWA D	W-FLG Z-U	0107084	11"	6.72"	7/8"	9 1/2"	8	1/2"	UN-SLOTTED
6"	AWWA D	W-FLG Z-U	0107085	11"	6.72"	7/8"	9 1/2"	8	1"	UN-SLOTTED
6"	AWWA D	W-FLG Z-S	0107086	11"	6.72"	7/8"	9 1/2"	8	1/2"	SLOTTED
6"	AWWA D	W-FLG Z-S	0107087	11"	6.72"	7/8"	9 1/2"	8	1"	SLOTTED
6"	AWWA D	W-FLG SS-U	0107088	11"	6.72"	7/8"	9 1/2"	8	1/4"	UN-SLOTTED
6"	AWWA D	W-FLG SS-U	0107089	11"	6.72"	7/8"	9 1/2"	8	1/2"	UN-SLOTTED
6"	AWWA D	W-FLG SS-S	0107090	11"	6.72"	7/8"	9 1/2"	8	1/4"	SLOTTED
6"	AWWA D	W-FLG SS-S	0107091	11"	6.72"	7/8"	9 1/2"	8	1/2"	SLOTTED
8"	AWWA D	W-FLG Z-U	0107092	13 1/2"	8.72"	7/8"	11 3/4"	8	1/2"	UN-SLOTTED
8"	AWWA D	W-FLG Z-U	0107093	13 1/2"	8.72"	7/8"	11 3/4"	8	1"	UN-SLOTTED
8"	AWWA D	W-FLG Z-S	0107094	13 1/2"	8.72"	7/8"	11 3/4"	8	1/2"	SLOTTED
8"	AWWA D	W-FLG Z-S	0107095	13 1/2"	8.72"	7/8"	11 3/4"	8	1"	SLOTTED
8"	AWWA D	W-FLG SS-U	0107096	13 1/2"	8.72"	7/8"	11 3/4"	8	1/4"	UN-SLOTTED
8"	AWWA D	W-FLG SS-U	0107097	13 1/2"	8.72"	7/8"	11 3/4"	8	1/2"	UN-SLOTTED
8"	AWWA D	W-FLG SS-S	0107098	13 1/2"	8.72"	7/8"	11 3/4"	8	1/4"	SLOTTED
8"	AWWA D	W-FLG SS-S	0107099	13 1/2"	8.72"	7/8"	11 3/4"	8	1/2"	SLOTTED
10"	AWWA D	W-FLG SS-U	0107100	16"	10.81"	1"	14 1/4"	12	1/4"	UN-SLOTTED
10"	AWWA D	W-FLG SS-U	0107101	16"	10.81"	1"	14 1/4"	12	1/2"	UN-SLOTTED
10"	AWWA D	W-FLG SS-S	0107102	16"	10.81"	1"	14 1/4"	12	1/4"	SLOTTED
10"	AWWA D	W-FLG SS-S	0107103	16"	10.81"	1"	14 1/4"	12	1/2"	SLOTTED

Matrix: Z = Zinc S = Slotted SS = 304 Stainless Steel U = Un-slotted Size = Valve Size x Thickness



USA: T: (978) 689-6066 • F: (978) 975-8350 • Watts.com  
 Canada: T: (905) 332-4090 • F: (905) 332-7068 • Watts.com  
 Latin America: T: (52) 81-1001-8600 • Watts.com